

WIRRAL CHILDREN AND YOUNG PEOPLE'S PLAN 2013-16

REVIEW 2013-14 AND REFRESH 2014-16

May 2014

TABLE OF CONTENTS

Introduction	1
Outcomes delivered in 2013-14	2
Review of 2013-14	8
Children and Young People's Plan 2014-16 Refresh	11
Appendix 1: The revised structure of Wirral Children's Trust.	17
Appendix 2: The revised Framework for Young People's Engagement and Participation.	18

INTRODUCTION

In 2013 Wirral Children's Trust published our 2013-16 Children and Young People's Plan (CYPP). This plan outlines how all partners working together will continue to make a positive difference to the lives of children, young people and their families.

In our CYPP we outlined the constraints Wirral Children's Trust operates under in light of significant public sector change and austerity, and this position continues. This was reflected in the CYPP through ensuring a small number of highly focused priorities to ensure cost-effective activity is targeted in the right areas. We also made a commitment to ensure that through review and refresh the CYPP would evolve and remain fit for purpose in these times of significant change.

Central to the delivery of the CYPP is the effective operation of the Children's Trust. The Trust operation is annually reviewed and all partner organisations have refreshed their commitment to focus on continually improving services for children and their families. The structure of the trust has also been reviewed in order to ensure that vibrant and effective partnership groups remain in place to deliver the agreed priorities and activities. The voices of children and young people are integral to ensuring services are fit for purpose and a refreshed framework of engagement and participation has also been developed by young people. The revised structure is shown in Appendix 1 and the refreshed Framework for Young People's Engagement and Participation is shown in Appendix 2.

The plan is a live document and we monitor progress on a quarterly basis through the Children's Trust Board. In addition we have made a commitment to review and refresh the CYPP on an annual basis to evidence the positive difference being made and ensure that the CYPP remains relevant and fit for purpose. This document does not replace the 2013-16 CYPP but is a concise tool for review, assessing progress and refreshing areas of work as required.

OUTCOMES DELIVERED IN 2013-14

The focus of the plan is the delivery of outcomes for children and families. The framework below shows the progress made in 2013-14 to deliver outcomes related to each priority area.





At the time of publication of the 39 outcome measures data is available for 15, not available 22 and 2 are awaiting development of a national definition. Of those with data available in 2013-14 figures have improved or stayed the same in 80% of indicators which suggests a positive direction of travel in the first year of our three year plan.

Comparison with England and Statistical Neighbour authorities indicates that the attainment gap between those children who are eligible for free school meals and those that are not is wider in Wirral than that seen nationally. Children in Wirral who are eligible for Free School Meals have historically performed much better than national and benchmark groups but in 2013 their level of performance fell in line with benchmark groups, contributing the widening gap.

Whilst Children in Need are higher than statistical neighbours, through great effort they have reduced to lowest number since 2009. This provides evidence of a positive direction of travel with plans in place to continue to improve this with targeted activities.

However there are key areas where performance is not as good as expected, these include the rate of children in care compared to other authorities, the breastfeeding rate and infant mortality. These key areas are continuing to be addressed in the refreshed CYPP.

Outcome Area 1: We will support you to have the best possible start to life and to develop healthy lifestyle choices.




Impact Indicator	2011/12	2012/13	2013/14	OfSTED Statistical Neighbours	All England	North West Region	Direction of Travel
PHOF 4.1 Infant Mortality	4.5 (2010)	4.9 (2011)	6.0 (2012)	4.2 (2012)	4.1 (2012)	4.5 (2012)	
PHOF 2.2 Breastfeeding at 6-8 weeks	29.9 (2010)	29.8 (2011)	29.8 (2012)	32.4 (2012)	32.3 (2012)	46.6 (2012)	N/A
PHOF 4.2 Tooth decay in children under 5	-	1.05 (2007/08)		1.46	1.11	1.52	N/A
PHOF 1.2 School readiness	Placeholder awaiting national definition						
PHOF 2.6 Excess weight in reception year	24.5	24.7	22.2	23.0 (2013)	22.2 (2013)	23.2 (2013)	
PHOF 2.6 Excess weight in Year 6	33.8	35.6	33.3	34.4 (2013)	33.2 (2013)	34.2 (2013)	
PHOF 2.4 Under 18 conception rate per 1,000 females (aged 15 – 17)	47.3 (2010)	34.6 (2011)	33.5 (2012)	35.3 (2012)	27.7 (2012)	31.6 (2012)	

Outcome Area 2: We will keep you safe from harm, in a family environment and where necessary support you at the earliest opportunity.

Impact Indicator	2011/12	2012/13	2013/14	OfSTED Statistical Neighbours	All England	North West Region	Direction of Travel
Looked after children rate per 10,000	99.0	99.0	100.0 (P)	81.5 (2013)	60.0 (2013)	79.0 (2013)	↔
Children in need rate per 10,000	429.7	417.7	401.6 (P)	370.1	332.2	343.1	↓
Child Protection Plan rate per 10,000	55.0	39.8	41.2 (P)	42.1	37.9	41.4	↔
Child Protection Plans lasting 2 years or more	3.5	4.2	3.8 (P)	4.2	5.2	4.2	↔
Child Protection Plan second or subsequent time	18.6	17.1	16.5 (P)	16.5	14.9	14.9	↓
Stability of foster placements – Number of moves	10.5	7.2 (2013)	6.8 (P)	10.8 (2012)	11.0 (2012)	9.3 (2011)	↓
Stability of foster placement – Length of placement	70.0	73.7 (2013)	67.9 (P)	69.1 (2012)	68.0 (2012)	68.2 (2011)	↓
Timeliness of adoptions	69.9	64.7	75.0 (P)	69.6 (2011)	74.0 (2011)	65.3 (2011)	↑
PHOF 1.11 Domestic Abuse	Placeholder awaiting national definition						

(P) = Provisional data

Outcome Area 3: We will raise your aspiration and achievement, so that you are equipped to enter adulthood and working life.

Impact Indicator	2011/12	2012/13	2013/14	OfSTED Statistical Neighbours	All England	North West Region	Direction of Travel
% Pupils achieving a Good Level of Development - EYFS	-	-	47.0 (2013)	48.3 (2013)	52.0 (2013)	50.0 (2013)	NA
% Pupils reaching expected level in Phonics decoding - KS1	-	54.0 (2012)	68.0 (2013)	68.7	69.0	69.0	NA
% Pupils achieving level 4+ (Reading, Writing and Maths) – KS2	-	74.0 (2012)	76.0 (2013)	76.6 (2013)	76.0 (2013)	77.0 (2013)	NA
Uncapped Average Point Score - KS4	468.7	476.1	462.5 (2013)	472.9 (2013)	455.3 (2013)	457.1 (2013)	NA
Percentage of Schools in Education Quality	-	94% (2012)	94% (2013)	-	-	-	NA
% Pupils achieving 5 + A* to C GCSEs including English and maths – KS4	64.1 (2011)	65.4 (2012)	65.9 (2013)	59.6 (2013)	58.6 (2013)	59.7 (2013)	NA
Total absence in Primary Schools	5.1	4.5 (2012)	5.2 (2013)	4.5 (2013)	4.7 (2013)	4.5 (2013)	
% of offers of education or training to 16 and 17 year olds (September Guarantee)	91.6	94.3 (2012)	95.9 (2013)	92.5 (2013)	92.1 (2013)	92.5 (2013)	
% of 16 – 18 year olds NEET	8.9	7.5 (2013)	5.9 (2014)	8.5 (2014)	6.1 (2014)	7.1 (2012)	

Outcome Area 4: We will support those of you who need extra help to achieve you potential and do well.

Impact Indicator	2011/12	2012/13	2013/14	OfSTED Statistical Neighbours	All England	North West Region	Direction of Travel
% Pupils reaching expected level in Phonics decoding (FSM)	-	41.0 (2012)	58.0 (2013)	55.1 (2013)	56.0 (2013)	55.0 (2013)	NA
Attainment Gap – Early Learning Goals (New 2013)	-	-	39.5 (2013)	38.0 (2013)	36.6 (2013)	38.7 (2013)	NA
Attainment gap - % Pupils achieving KS2 level 4+ (Reading, Writing and Maths) – (New 2013)	-	-	20.9 (2013)	-	-	-	NA
% Pupils achieving 5 + A* to C GCSE grade including English and maths (FSM gap)	34.2 (2011)	30.0 (2012)	34.8 (2013)	31.8 (2012)	26.4 (2012)	30.0 (2012)	NA
% Pupils achieving 5 + A* to C GCSE grade including English and maths (SEN Statement)	9.0 (2011)	12.0 (2012)	11.5 (2013)	10.5 (2013)	9.5 (2013)	9.7 (2013)	NA
% LAC Pupils achieving KS2 level 4+ (Reading, Writing and Maths) – (New 2013)	-	-	42.9 (2013)	-	-	-	NA
% LAC Pupils achieving 5 + A* to C GCSE grade including English and maths	10.9 (2011)	12.0 (2012)	11.8 (2013)	15.2 (2012)	14.6 (2012)	15.9 (2012)	NA
Attainment at Level 2 by aged 19 (FSM gap)	20.0 (2011)	21.0 (2012)	17.0 (2013)	17.7 (2013)	16.0 (2013)	18.0 (2013)	NA

Impact Indicator	2011/12	2012/13	2013/14	OfSTED Statistical Neighbours	All England	North West Region	Direction of Travel
Attainment at Level 3 by aged 19 (FSM gap)	36.0 (2011)	34.0 (2012)	36.0 (2013)	27.2 (2013)	24.0 (2013)	28.0 (2013)	NA
% Care Leavers that are EET	39.0 (2011)	48.0 (2012)	58.1 (2013)	62.8 (2012)	58.0 (2012)	58.0 (2012)	NA

Outcome Area 5: We will listen to your views to inform decision that affect you.

Impact Indicator	2011/12	2012/13	2013/14	OfSTED Statistical Neighbours	All England	North West Region	Direction of Travel
% LAC participating in their reviews	93.8	94.2 (2012)	95.7 (2013)	tbc	tbc	tbc	NA
Number of Schools in Youth Parliament	-	12	16	-	-	-	NA
Percentage of pupils who have shared their ideas about their school- Primary (HELP survey 2013)	-	-	54.5% Baseline	-	-	-	NA
Percentage of pupils who have shared their ideas about their school- Secondary (HELP survey 2013)	-	-	65.7% Baseline	-	-	-	NA

REVIEW OF 2013-14

In the development of our strategic CYPP the majority of the activity outlined will be delivered over the three years of the plan. The outcomes delivered in the first year have been highlighted in the previous section and work will continue to improve these outcomes over the remaining two years of our plan.

In our review we have identified areas where difficulties have arisen in delivery and an exception is provided relating to these areas outlining where planned work has been reviewed. In addition in other areas due to changes in circumstances the activity requires amendment and a refreshed delivery item will be added to the plan.

Priority	What we will deliver 2013-16	Exception
<p>Priority 1: From conception to age five Wirral Children have the best possible physical, social, emotional and psychological start in life.</p>	<ul style="list-style-type: none"> Breastfeeding will be embedded in the nursery, primary and secondary school curriculum through the use of resources that show women breastfeeding instead of feeding formula milk so that children grow up experiencing breastfeeding as the norm. 	<p><i>Breastfeeding rates are lower than expected and the target is not being achieved. There are considerable resources currently allocated to provide support in the community following discharge from hospital to sustain breastfeeding. Rates need to be increased in order to enable the 6-8 week target to be reached. A workshop for key stakeholders will be held in June 2014 to map out existing provision and identify opportunities to increase rates. A breastfeeding needs assessment is being completed which will be used to inform the breastfeeding strategy going forward.</i></p>
<p>Priority 2: From 5 - 19 years, Wirral children and young people's health and well-being will continue to develop.</p>	<ul style="list-style-type: none"> The Teenage Pregnancy Strategy will be reviewed to focus on 16 and 17 years olds living in wards with under 18s conception rates higher than the Wirral average and priority will be given to appointing a 1-1 support worker for those young people assessed as 'at risk' of early parenthood. 	<p><i>The most recently published annual statistics for under-18 conceptions are from 2012. These figures show that Wirral recorded an under - 18 conception rate of 33.5 per 1000, 15 to 17 year olds for the calendar year 2012, (195 conceptions overall), this was a reduction from the 2011 rate of 34.6 per 1000, 15 to 17 year olds (206 conceptions overall). The strategic approach to teenage pregnancy is currently under review and an options paper is to be presented to the Children's Trust Board in May.</i></p>

Priority	What we will deliver 2013-16	Exception
<p>Priorities 6: To ensure that there is appropriate support and challenge to educational settings.</p>	<ul style="list-style-type: none"> Review, redesign and market traded services for schools. Manage school traded services cost effectively and efficiently. 	<p><i>The benchmark at the end of EYFS has changed to the % of pupils achieving a good level of development. 47.2% of Wirral pupils a good level of development which is below the national average of 52%.</i></p> <p><i>The Early Years team have identified schools below the national average and are working closely to improve provision. An Early Years Continual Professional Development programme is in place delivered by expert practitioner.</i></p>
<p>Priority 7: To ensure children and young people across Wirral will have improved attainment levels and skills, to enable them to fulfil their aspirations.</p>	<ul style="list-style-type: none"> Schools below floor standards, schools causing concern and/or schools in an OFSTED category will be supported to make good or better progress; those in Schools Causing Concern or an OFSTED category should be removed from that category in the shortest possible time. 	<p><i>The performance measure has changed to L4+ in reading, writing and mathematics which has resulted in many schools FSM gap widening because of lower attainment in reading. The FSM gap is 22% compared to national gap of 17%.</i></p> <p><i>The School Improvement Team have identified schools with the largest free school meals gap. Pupil attainment is tracked and teachers are held account for pupil progress. A School Causing Concern process is implemented with schools that have the largest gap.</i></p>
<p>Priority 9: Improve the educational outcomes for vulnerable children and young people.</p>	<ul style="list-style-type: none"> Expansion of the project targeting primary schools with the largest attainment gaps. The Raising Attainment for Disadvantaged Youngsters (RADY) project for secondary schools will continue to develop and outcomes and learning will be transferred to all secondary and primary schools. Advise and challenge schools and settings to utilise the additional funding for children in care to improve outcomes. 	<p><i>The free school meal gap has increased to 35% compared to the national average of 25%. Attainment of non-free school meals is significantly better than the national average with attainment increasing at a higher rate than free school meal pupils. Free school meals pupils attained higher than the national average. Analysis of pupil premium spend was carried out by the School Improvement Team and fed back to the Schools Forum and head teachers. Schools Causing Concern process used to hold head teachers account in narrowing the gap.</i></p> <p><i>Children in Care: The time between the end of Year 10 and the final examinations in year 11 can be a difficult time for CiC with several changes including exams, finishing school</i></p>

Priority	What we will deliver 2013-16	Exception
	<ul style="list-style-type: none"> Monitor and report on the compliance of and quality of Person Education Plans (PEPs) as a central support document. 	<p><i>and moving to the leaving Care team. For the target to be achieved the 9 schools that have targeted CiC to achieve %+A*-C EM must achieve 100% success.</i></p> <p><i>The Virtual Headteacher discussed the individual pupils with the 8 Schools resulting in the 16 CiC targeted at the beginning of the year being reduced to the current 10 due to a variety of individual reasons. All Head teachers have expressed the concern that “providing nothing goes wrong” the young people should meet their individual targets</i></p> <p><i>Auditing checks are in place to assess if PEPs are in place and up to date. The results indicate that continuing work is required for PEPs to be in place as a support document. 42% PEPs are in place for Primary age CiC and 43% for secondary age CiC.</i></p>
<p>Priority 11: Enhance the involvement of children and young people in the decision making process.</p>	<ul style="list-style-type: none"> Children’s Takeover Day 2013 involving 50 young people in care. 	<p><i>The takeover day was scheduled in 2013 but was postponed due to staff capacity and limited take up. The day is being reset for 2014 ensuring joint planning and resourcing.</i></p>

CHILDREN AND YOUNG PEOPLE'S PLAN 2014-16 REFRESH

The review of the first year of the CYPP indicates the initial progress made to deliver our planned three year activities. It also highlights the areas where targeted progress continues to be required. No changes have been made to the eleven plan priorities however two new activities have been introduced which are highlighted below.

In continuing to develop the planning for children and their families the Children's Trust aims to ensure the priorities and activities are coordinated and aligned to improve the outcomes for children and families in Wirral. As a result of this review and refresh process four key transformational outcomes have been identified to help drive and focus the work of all partners; these are:

- Children are ready for school;
- Young people are ready for work and adulthood;
- Children and young people have their needs met as early as possible;
- Children and young people feel safe and are safe.

These four areas will be delivered by the identified plan priorities and activities outlined in this plan.

The CYPP quarterly review and challenge by the Children's Trust Board will ensure that progress continues to be made in improving outcomes. In addition this will allow any further significant organisational changes to be monitored and activity reviewed and refreshed as required.

Two years of this plan remain and there is continued commitment from all partner organisations to work together to deliver our priorities and our vision:

“To enable Wirral's children, young people and families to access services quickly in order to be secure, healthy, have fun and achieve their full potential.”

Priority	What we will deliver in 2014-16 - Refreshed
<p>Priority 1: From conception to age five Wirral Children have the best possible physical, social, emotional and psychological start in life.</p>	<ul style="list-style-type: none"> • A pathway will be developed to ensure that all relevant agencies understand the signs of post natal depression and offer early help/referral to appropriate services – to include nursery and school based staff and practitioners working in the IFIP. • Brief intervention training is to be offered to nursery and Early Years Practitioners to assist in supporting families who may be on the edge of services. • A stop-smoking service to work specifically with pregnant women and targeting younger women will be commissioned. The potential for this service to offer holistic brief interventions or referral to other relevant services will be explored e.g. weight management, emotional health and wellbeing, perinatal mental health, sexual health services. • An audit of infant deaths will be conducted to gather intelligence to inform targeted health improvement campaign. • Breastfeeding will be embedded in the nursery, primary and secondary school curriculum through the use of resources that show women breastfeeding instead of feeding formula milk so that children grow up experiencing breastfeeding as the norm. • The benefits of Vitamin D across maternity, health visiting, GP and pharmacy services will be promoted in order to increase uptake among pregnant women and under 5's. • Good oral hygiene to be promoted as part of the Personal Health and Social Education (PHSE) curriculum. • Explore the potential to increase access to fluoride through options including, extending the fluoride milk programme to early years settings and the development of a toothpaste distribution scheme. • Midwifery and health visiting services to identify women who are obese at their 12 week ante natal assessment. • Examine local data to determine current levels of maternal obesity in Wirral and identify appropriate solutions to tackle these. • Develop an early year's programme to include focus on healthy eating and being active. • Develop a Wirral obesity strategy within the wider Health and Wellbeing Strategy with an emphasis on prevention and physical activity. • Explore the potential to deliver healthy cookery classes in schools.

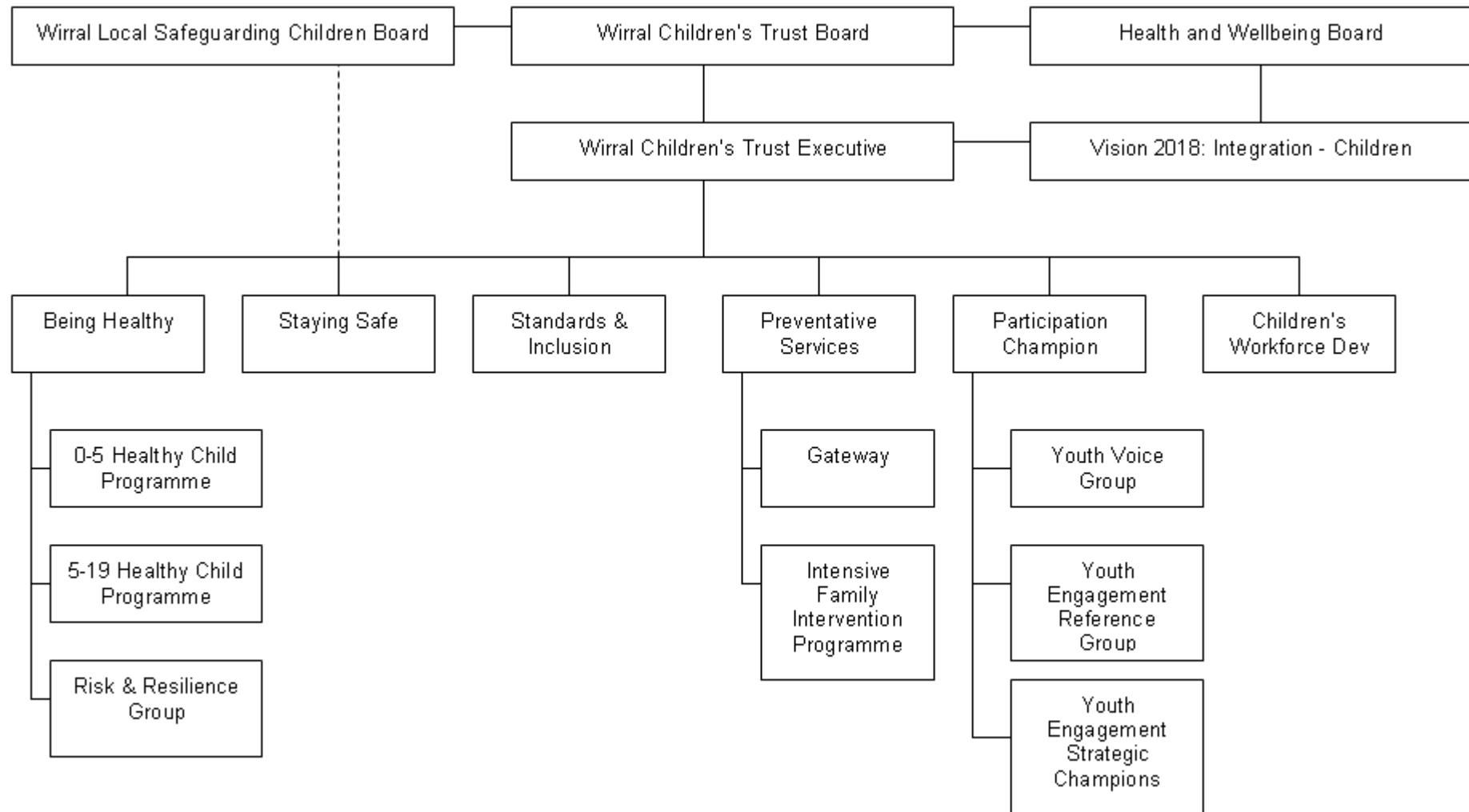
Priority	What we will deliver in 2014-16 - Refreshed
<p>Priority 2: From 5 - 19 years, Wirral children and young people's health and well-being will continue to develop.</p>	<ul style="list-style-type: none"> • A Schools Substance Misuse Advisor will be recruited to support the promotion, adoption and implementation of the following: • Schools Substance Misuse guidance and policy documents; • Alcohol Alright brief intervention toolkit; • Provision of interventions for young people admitted to the Accident and Emergency department, addressing the presenting issues and reducing the likelihood of future presentations; • Involvement of the young person's parents or carers; • Ensure that specialist substance misuse agencies engage with the IFIP to provide education, treatment and other support for families where parents or children are misusing substances; • Develop a range of bespoke programmes of activities and interventions to target vulnerable young women misusing alcohol; • Deliver specialist treatment/interventions via CAMHS, Response and Youth Offending Services to reduce substance misuse, improve school attendance and improve family relationships. • The Sexually Transmitted Infections (STI) screening programme will be commissioned to monitor and address the increase in Gonorrhoea cases amongst the 16-25 year old heterosexual population in Wirral. • The Teenage Pregnancy Strategy will be reviewed to focus on 16 and 17 years olds living in wards with under 18s conception rates higher than the Wirral average and priority will be given to appointing a 1-1 support worker for those young people assessed as 'at risk' of early parenthood. • The brief intervention toolkit will be embedded into services to engage and advise young people on risks associated to alcohol. • We will raise awareness of, and unpick myths about contraception. • Contraception provision in Wirral secondary schools will be further developed. • A stop-smoking service to work specifically with pregnant women and targeting younger women will be commissioned. • The potential for this service to offer holistic brief interventions or referral to other relevant services e.g. weight management, emotional health and wellbeing, sexual health and housing support. • An emotional health, psychological wellbeing and mental health pathway will be established to ensure schools have direct access to informal generic advice from CAMHS. • Pilot the proposed new 'health and happiness' indicator (once confirmed) with low level school based emotional health and wellbeing intervention service as well as other Health Services in Schools (HSIS) providers.

Priority	What we will deliver in 2014-16 - Refreshed
<p>Priority 3: To support those children and young people who require extra help at the earliest opportunity.</p>	<ul style="list-style-type: none"> • The Preventative Services Review will be completed and implemented. • <i>The review will confirm a commitment from all partners to co-develop and deliver a preventative approach which targets services to those who need them the most.</i> • A quality assurance framework will be developed to measure the effectiveness of targeted services.
<p>Priority 4: To improve outcomes for children and young people in need of protection.</p>	<ul style="list-style-type: none"> • Implement revision of Working Together 2013 including reviewing thresholds. • Develop a joint agency approach to a Multi-Agency Safeguarding Hub (MASH). • Ensure the Wirral Safeguarding Children Board (WSCB) Business Plan includes action related to runaways and sexual exploitation. • Ensuring all agencies have clear processes for listening to the voice of the child. • Ensure that lessons learnt nationally and locally from Serious Case Reviews (SCR) and Critical Incident Reviews inform practice. • Review the effectiveness of single gateway for homelessness 16-17 year olds to ensure suitable accommodation is provided. • Ensure promotional programmes are in place and effectively reviewed for: <ul style="list-style-type: none"> ○ Road safety ○ Anti bullying ○ Teenage Pregnancy ○ Sexual Health ○ E Safety ○ Safety in the home
<p>Priority 5: To improve outcomes for Children in Care and Care Leavers.</p>	<ul style="list-style-type: none"> • The Corporate Parenting Strategy and the refreshed Looked After Children's Strategy. • The Adoption Improvement Plan will be developed and implemented. • Social Work practice to comply with the Pre-Proceedings Protocol. • We will develop our readiness for the new Inspection Framework for children in care and care leavers, targeting key areas that require additional focus.

Priority	What we will deliver in 2014-16 - Refreshed
<p>Priority 6: To ensure that there is appropriate support and challenge to educational settings.</p>	<ul style="list-style-type: none"> • Review, redesign and market traded services for schools. • Manage school traded services cost effectively and efficiently.
<p>Priority 7: To ensure children and young people across Wirral will have improved attainment levels and skills, to enable them to fulfil their aspirations.</p>	<ul style="list-style-type: none"> • Schools below floor standards, schools causing concern and/or schools in an OFSTED category will be supported to make good or better progress; those in Schools Causing Concern or an OFSTED category should be removed from that category in the shortest possible time. • Persistent Absence will be reduced and attendance in primary schools improved.
<p>Priority 8: Effectively promote and enable participation and progression for all young people.</p>	<ul style="list-style-type: none"> • Young people will have access to, and be equipped to take advantage of, a range of training, employment or entrepreneurship opportunities. • To provide young people with the best possible preparation for work we will maintain and further develop strong partnerships which connect the educational sector, training providers and the business sector. • Lifelong and family learning provision will be focused to engage and motivate disadvantaged families, encourage achievement and progression and strengthen communities. • The Council joint protocol for homeless 16 and 17 year olds will be delivered and embedded. • A targeted careers information, advice and guidance service for vulnerable young people aged 16-18 (up to the age of 24 if subject to a learning difficulty assessment) will be delivered. • A web based careers information and advice interactive tool – Mersey Interactive (www.merseyinteractive.com) will be provided for use by all Wirral young people, parents, carers and teaching professionals. • Contribute to the Liverpool City Region Apprenticeship 'Hub' and ensure Wirral supports the headline regional delivery target of 10,000 apprenticeships starts in 2013-14.

Priority	What we will deliver in 2014-16 - Refreshed
<p>Priority 9: Improve the educational outcomes for vulnerable children and young people.</p>	<ul style="list-style-type: none"> • Ensure that there are sufficient childcare places to meet local needs. • Provide information, advice and guidance to parents through the Family Information Service (FIS). • <i>Improve access to early intervention and preventative services through Children's Centres particularly for the most vulnerable.</i> • Expansion of the project targeting primary schools with the largest attainment gaps. • The Raising Attainment for Disadvantaged Youngsters (RADY) project for secondary schools will continue to develop and outcomes and learning will be transferred to all secondary and primary schools. • Narrowing the post 16 education attainment gap projects will continue with schools and further education providers; specifically at level 3. • Review, monitor and report on the attainment, progress, attendance and exclusions. • Advise and challenge schools and settings to utilise the additional funding for children in care to improve outcomes. • Monitor and report on the compliance of and quality of Person Education Plans (PEPs) as a central support document. • Provide a programme of academic mentoring for young people in year 9 onwards. • Deliver an internship programme for care leavers. • Develop a Housing Strategy Plan for young people at risk and care leavers.
<p>Priority 10: Improve provision, choice and outcomes for children and young people with Special Educational Needs and/or Disabilities.</p>	<ul style="list-style-type: none"> • A continuum of specialist education provision for SEND that meets the local needs of children and young people. • A local offer that publishes in one place information about educational, health and social care provision for children and young people aged 0- 25 with SEND and their parents and carers. Coupled with clear assessment arrangements. • A full review of the specialist service area. • Develop a Council all age disability service to ensure lifelong planning and needs led support for children, young people, adults and their carers.
<p>Priority 11: Enhance the involvement of children and young people in the decision making process.</p>	<ul style="list-style-type: none"> • Key participation events - The Youth Voice Conference, Youth Parliament and Participation Action Group. • Development of Junior Children in Care Council (CICC). • Train and support young people in care to formally recruit and select Wirral social care staff. • CICC peer mentoring for young people in care. • Children's Takeover Day 2014 involving 50 young people in care. • The implementation of the Wirral Peer Education Programme (WPEP).

APPENDIX 1: The revised structure of Wirral Children's Trust



APPENDIX 2: The revised Framework for Young People’s Engagement and Participation.

Figure 1: Framework for Young People’s Engagement and Participation

