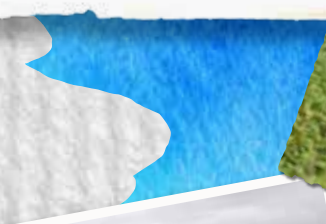
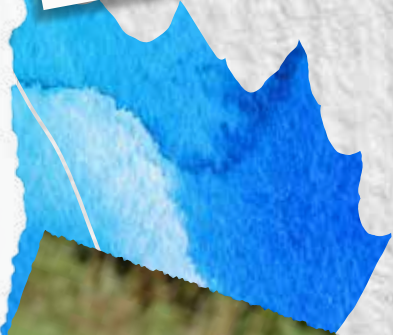


# PORT SUNLIGHT RIVER PARK



Park managed by



**Wirral Autistic Society**  
Support, Growth & Independence





## Port Sunlight River Park is a 30 hectare green space, park and wetland reclaimed from a former landfill site, there is a 37 metre hill which offers unrivalled views across the Mersey and Wirral

**Port Sunlight River Park is a vibrant, stunning green space formed on the site of the former landfill at Bromborough Docks.**

The River Park has transformed what was once a landfill and closed area into a stunning green space, with vibrant community woodland and ecologically important wetland area at the centre of the local community. The 37 metre high hill at the heart of the park, offers excellent views over to the Liverpool Skyline and waterfront, a UNESCO World Heritage site, across Wirral and North Wales, with the park offering just under 3 miles of paths for you to enjoy a variety of views, flora and fauna.

Funding for the transformation works and long term management has been made possible by funding from the Newlands 2 programme, led by the Forestry Commission and supported by BIS. Biffa and Unilever have donated both land and funds and other grants have been provided.



## EVENTS

Port Sunlight River Park hosts a variety of events throughout the year. To find out more visit [www.portsunlightriverpark.com](http://www.portsunlightriverpark.com)

### Volunteer

We are always seeking volunteers to help look after Port Sunlight River Park. If you would like to learn new skills, meet new people and have a positive impact then get in touch with Wirral Autistic Society.

### Corporate support

If your company is interested in supporting Port Sunlight River Park, please contact The Land Trust on: [portsunlightriverpark@thelandtrust.org.uk](mailto:portsunlightriverpark@thelandtrust.org.uk) or 01925 852 005

### Donate

As a charity, we have limited budget to maintain Port Sunlight River Park. Please help us keep the site looking great by donating while you visit or online at the website. You can also see our Wish List, so let us know if there's an item you'd like to buy or contribute towards.

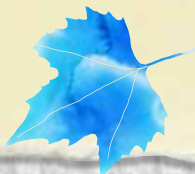


# OPENING TIMES

The Park is open  
down to dusk.

Admission to Port Sunlight River Park  
is **FREE!**

Limited parking is available on Dock Road North,  
Bromborough. You can also access the park on  
foot from Shorefields.



# MANAGEMENT

Following its completion in 2014, the park  
is managed by The Land Trust, a national  
charity specialising in the care of green  
spaces. Through its appointment of Wirral  
Autistic Society who manage Port Sunlight  
River Park on a day to day basis, The Land  
Trust ensures the site is managed for the  
benefit of communities and wildlife as well  
as to attract visitors to this stunning county  
to support the local economy.

Wirral Autistic Society provides support to people  
with autism, to provide a range of living options,  
day service and community support to people  
from all over the UK.

Park managed by



Port Sunlight River Park has been generously supported by:



# CONTACT US

Port Sunlight River Park, Dock Road North, Bromborough CH62 4LN  
(no correspondence to this address)

Managing Agent: **Wirral Autistic Society**

Call: **0151 334 7510**

Email: [portsunlightriverpark@thelandtrust.org.uk](mailto:portsunlightriverpark@thelandtrust.org.uk)

Visit: [www.portsunlightriverpark.com](http://www.portsunlightriverpark.com)

 [www.facebook.com/portsunlightriverpark](https://www.facebook.com/portsunlightriverpark)

 [www.twitter.com/PSRiverpark](https://www.twitter.com/PSRiverpark)

