

Initial Year of
Application 2018

Wirral Council
Parks Allotments & Countryside Service

Meols Parade Gardens
Management Plan
2019-2024
(February 2022)



Management Plan written by:	Date:
The Friends of Meols Parade Gardens & Laura Volan	15/11/2017
Updates made	08/02/2022
Management Plan authroised by:	
Mary Worrall & Anthony Bestwick	

Coronavirus (COVID-19) impact on Meols Parade Gardens

In March 2020, as the country went into lockdown, Meols Parade Gardens maintenance schedule could not be carried out until later in the year. Also all volunteer work from March 2020 stopped in Parade Gardens with much reduced volunteer work resuming late July 2020.

The Friends volunteers have a duty of care to our volunteers and guidance was provided to ensure that to all volunteers worked safely.

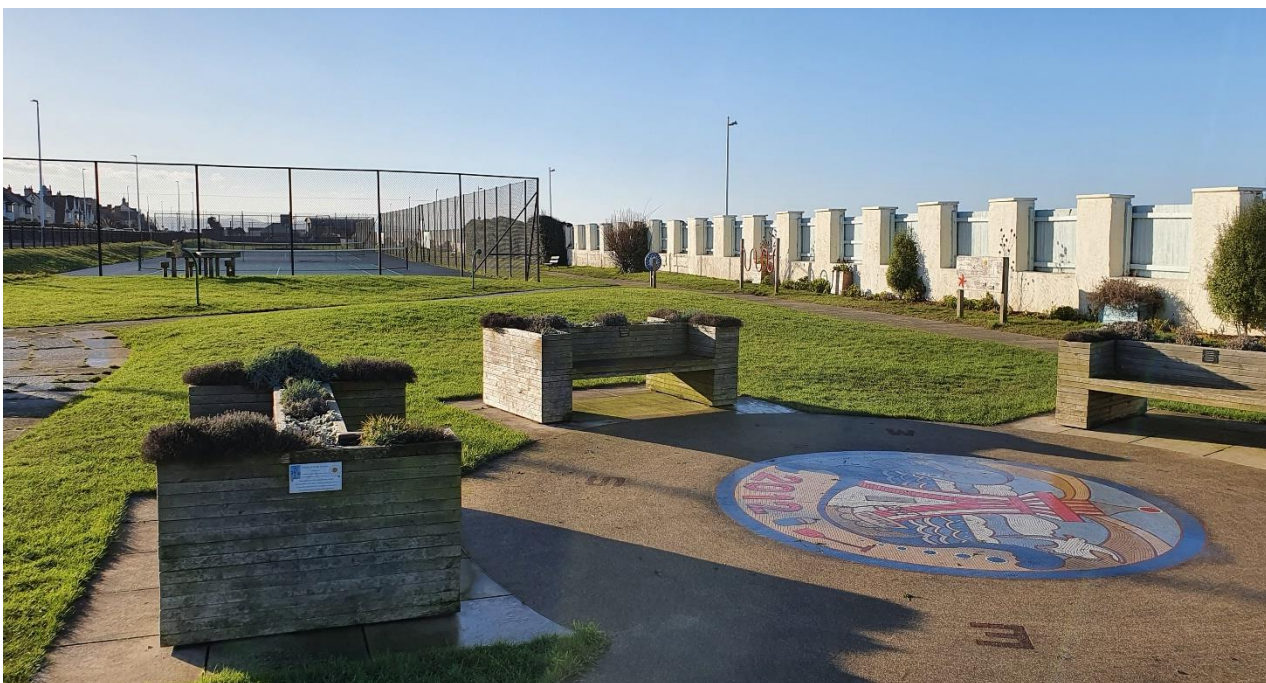
Entering 2021, volunteering work could remain to take place under certain Covid instructions such as social distancing and sanitising regimes. For the parks staff, the 2021 spring season began with staff intervention whilst a recent re-structure was being finalized (structure displayed on page 29) and this has resulted in the allocation of a permanent member of staff to be based at Meols Parade Gardens along with a seasonal maintenance operative.

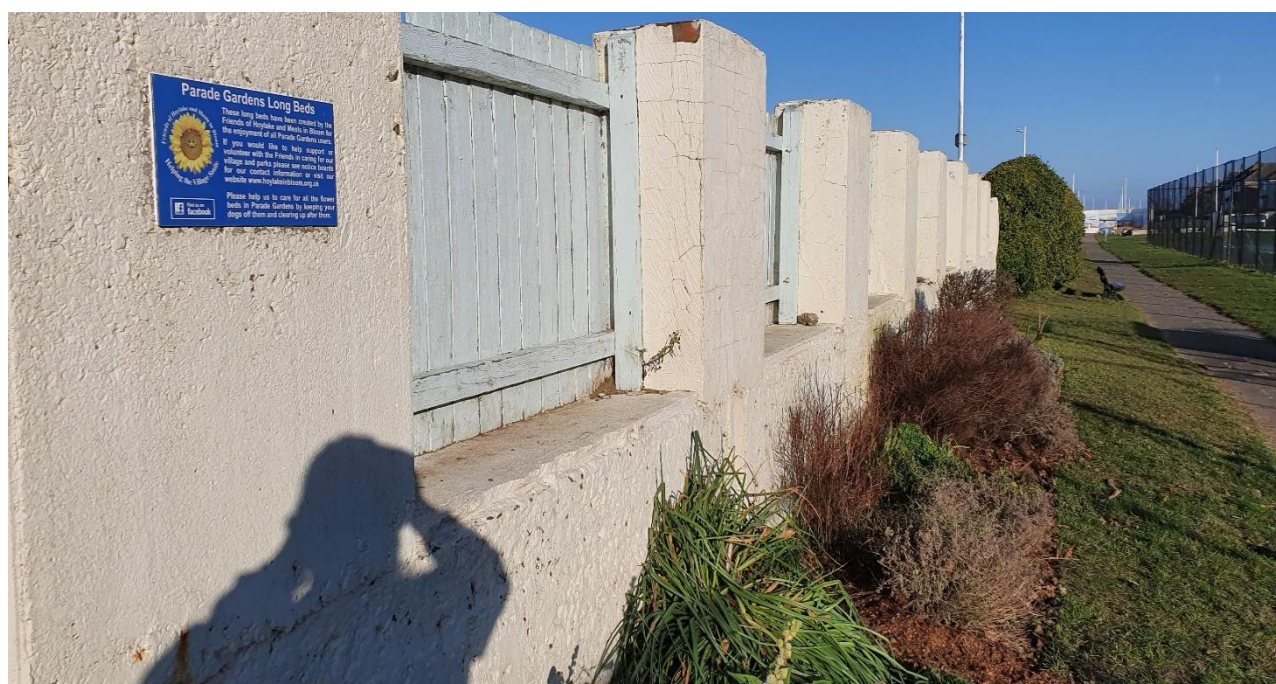
For the management there has been put in place a General Parks Manager and Team Leader, who have been actively engaged in the maintenance of the parks in this area and also have worked closely with the Hoylake & Meols in Bloom to improve Meols Parade Gardens.

The 2021 Green Flag assessment is included in this management plan (pages 50- 53) and there are management notes included accordingly for the feedback from the assessment.

During the Coronavirus lock down period, the volunteers group developed a new web site **www.hoylakeinbloom.co.uk** which now incorporates all volunteer activities for Hoylake and Meols towns, Hoylake and Meols train stations, Parade Gardens and Queens Parks.

One task for the volunteer group was the re-painting of some seaward wall fence panels, and this has freshened up the park very well.





A winter plan was created which included Meols Parade Gardens and great work has been carried out to cut back shrubs and bushes to create a much neater look around the park, and this will bode well for the presentation of the park as we enter the spring and summer months.

2021/22 - Winter Works Programme Hoylake & Meols sites

	Site	Priority	Task
1	Queens Park	HIGH	Cut all Tamaraus to 4ft, individualise all shrubs and shape accordingly to 4ft. Feather and raise all trees for ease of Summer Maintenance. Make all entrance shrub beds 3ft max to improve safety.
2	Parade Gardens	HIGH	Reduce Height of all shrubs (Ivy, Tamaraus) on the back sea wall to the Height of the fence. Prune back to shrub bed edging as discussed, Hard prune to 2ft the Buddleia on site. Prune Holly branches above 7ft for clear paths, Reduce Height of privot by walls to 4ft, and thin/individualise where possible, Look into possible ways to reduce the shrub by the wall and toilets to the wall and back from beds.
3	Meols Lower Parks	MEDIUM	Prune all shrubs to a tight cut and individualise fashion. Check trees for feathering, Clear and cut back shrubs in play area making them open and safe. Tree bark the beds here.
4	Carr lane Play Area	LOW	Cut back fencing on right by businesses to assist with Summer Maintenance, tidy around trees and entrance to play area.
5	The Grove	LOW	Cut back all hedges and open paths, extra attention around play area, feather and raise trees accordingly for ease of summer maintenance.
6	Trinity Cem.	LOW	Cut privot hedge, remove ivy back main thickness or as much as possible, strim and cut all site,
7	Roman Road Nature Area	LOW	Strim cut back to rocks and make entrance point accessible.
8	TOP DRESS	HIGH	Top Dress ALL Greens as a team with Dave and Kevin





Contents

- **Introduction**
- **The wider policy context**
- **Vision statement and aims**
- **Site information**
- **Summary of main uses**
- **A brief pictorial history**
- **Green Flag Award analysis and assessment**
- **Action plan**
- **Appendices**
 - a) Site elements quantities and Schematic plan
 - b) Parks and Countryside general service requirement
 - c) Wirral Council's environmental Policy
 - d) Wirral Council's General Statement of Intent
 - e) List of grants and business sponsorship
 - f) Green Flag Assessment 2021
 - g) Parade Gardens visitor survey
 - h) Project bank
 - i) Aspirations for Parade Gardens

Visitors to the Gardens enjoying refreshments at the Friends tea kiosk



Introduction

The Friends of Parade Gardens is a sub group of The Friends of Hoylake and Meols in Bloom whose aim is to help make Hoylake and Meols a more beautiful place to visit, live, work, rest and play by planting and caring for the many floral displays in and around Hoylake and Meols which includes caring for our parks and open spaces, thus enhancing the environment for the benefit of everyone.

For the purpose of this document 'The Friends of Parade Gardens' and 'The Friends of Hoylake and Meols in Bloom' should be seen as one entity.

This management plan is intended to provide a framework for the development and improvement of Parade gardens. If you wish to find out further information about this document or submit any suggestions, or if you wish to join the Friends of Parade Gardens please contact:

Wirral Council
Parks Allotments & Countryside Service
Wirral Council
Wallasey Town Hall
Brighton Street
Wallasey
Wirral, CH44 8ED

Email: Streetscene@wirral.gov.uk

1. Wider Policy Context

Wirral Council's Parks and Countryside Service are based within the Neighbour Services Department of Wirral Council.

The content and structure of the Management Plan has been informed by the following guidelines:

A Guide to Producing Park and Green Space Management Plans (CABE Space, 2004)

<https://webarchive.nationalarchives.gov.uk/ukgwa/20110118095356/http://www.cabe.org.uk/files/parks-and-green-space-management-plans.pdf>

Raising the Standard: The Green Flag Awards Guidance Manual (Keep Britain Tidy, 2016)

www.greenflagaward.org/media/1019/green-flag-award-guidelines.pdf

1.1. Corporate Objectives

The Council's Vision is that Wirral will be a place where the vulnerable are safe and protected, where employers want to invest and local businesses thrive, and where good health and an excellent quality of life is within the reach of everyone who lives here.

The Wirral Plan agreed by cabinet in September 2021 sets out a series of pledges which the Council and its partners will work to achieve by 2026 focussing on 5 key themes:

- Inclusive Economy
- Safe and Pleasant Communities
- Sustainable Environment
- Brighter futures
- Active and healthy lives



The Wirral 2021-26 plan is available to download online:

<http://democracy.wirral.gov.uk/documents/s50080601/Appendix%201%20Wirral%20Plan%202021-26.pdf>

1.2. Parks and Countryside Service Objectives

The department's role is to protect the environmental quality of key locations across the borough for all local people, communities, and visitors to enjoy and to influence investors to operate their businesses and encourage new investors. Parks and countryside site maintenance and land uses will be re-aligned where appropriate to achieve resource and economic efficiencies whilst promoting health, social and environmental benefits to our communities.

The Parks and Countryside Service have produced a 10-year Parks and Open Spaces Strategy that will inform and direct the next 10 years for the service (running from 2014-2024). It is available online at:

<https://www.wirral.gov.uk/sites/default/files/all/Leisure%20parks%20and%20events/parks%20and%20open%20spaces/Wirral%20Parks%20and%20Open%20Spaces%20Strategy%202014-2024.pdf>

The Strategy sets out how Wirral Parks and Countryside Service will aim to provide attractive and well managed parks and open spaces, whilst being accessible; and providing positive and healthy activities for all local people, communities, and visitors to enjoy and to attract and retain investment in the borough. The service also intends to contribute to the environmental sustainability and biodiversity of Wirral to achieve a good balance by protecting habitats while supporting economic growth.

1.3. Environmental Initiatives

Wirral Council is committed to carrying out its work in an environmentally responsible manner.

Wirral Council declared an Environment and Climate Emergency at Council in July 2019 and through this committed to action to address the ecological and climate crisis that we face.

The commitment to action aims to:

- cut climate damaging pollution locally in line with global targets, whilst developing resilience to more extreme weather patterns and rising sea levels that impact Wirral
- protect and enhance biodiversity

As a local authority, we can have a positive influence through:

- how we organise our operations and services
- the regulations and policies we set
- the goods and services we buy
- the investments we make
- the example we set to others.

Tackling the ecological and climate crisis presents major opportunities locally to improve quality of life, health, wellbeing and the economy.

More information on the Climate Emergency Declaration maybe found at:

<https://www.wirral.gov.uk/about-council/climate-change-and-sustainability/climate-change-action>

To deliver against these aims Wirral Has developed 'Cool Wirral'. The Cool Wirral campaign is aimed at encouraging local climate-related action in support of the delivery of the 'Cool 2 Climate Change Strategy for Wirral:-

[View Wirral Council's Cool 2 climate strategy and progress reports](#)

The Cool Wirral Partnership (formerly the Wirral Climate Change Group) co-ordinates local action on climate change. The partnership is supported by Wirral Council and a variety of partnership.

More information on the Cool Wirral Partnership maybe found at:

[https://www.wirral.gov.uk/about-council/climate-change-and-sustainability/cool-wirral#:~:text=The%20Cool%20Wirral%20Partnership%20\(formerly,Wirral%20Partnership%20NHS](https://www.wirral.gov.uk/about-council/climate-change-and-sustainability/cool-wirral#:~:text=The%20Cool%20Wirral%20Partnership%20(formerly,Wirral%20Partnership%20NHS)

Some key initiatives include:-

Designating Pollinators and wildflower sites

A large proportion of pollinators are flies, including more than 250 species of hoverfly. Bees make up about a quarter of the pollinating insects and in the UK alone there are approximately 250 species of bee, 24 species of bumblebee, 225 species of solitary bee and just one species of honeybee. Butterflies and moths are also pollinators as well as bugs and beetles.

In line with the council's Climate Emergency Response, steps are being taken to prioritise pollinators. Dependant on the location of a verge, pollinators are prioritised in various ways, these methods can include:

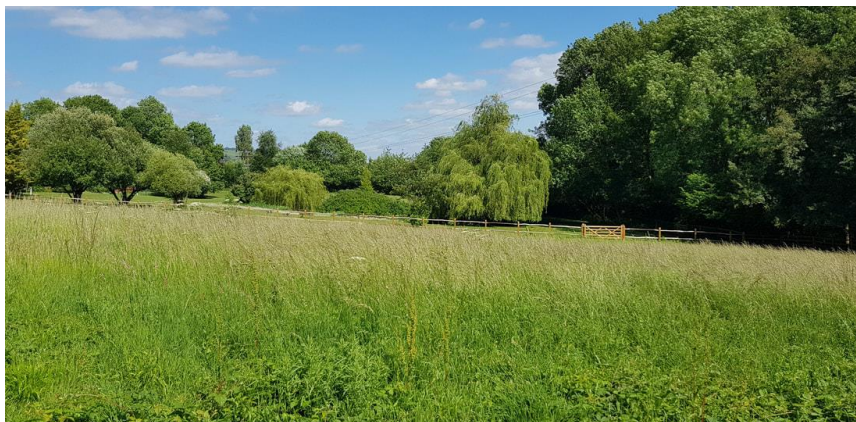
- planting pollinator friendly plants
- not mowing grass verges when wildflowers of significance are in season
- reduced weed removal in the area of pollinator sights

<https://www.wirral.gov.uk/environmental-problems/street-care-and-cleaning/pollinators-and-wildflower-sites>

No Mow May

Throughout the month of May, the council takes part in the [No Mow May campaign](#), which is about stopping mowing in general grass areas in parks to help bees, butterflies and wildlife.

No Mow May



What?

#NoMowMay is about stopping mowing in general grass areas in parks to help our bees, butterflies, wildlife and us. This follows Plantlife's national campaign.

Why?

**Put quite simply, plants need pollinators and pollinators need plants.
However, both are in sharp decline.**

Insect pollinator species have experienced national declines and wildflowers provide a vital habitat, food source and refuge for many bees, butterflies, birds, bats and bugs. Wirral's parks and open spaces can provide a vital resource for struggling wildlife species.

Research conducted by Plantlife's Every Flower Counts survey suggest that by not mowing in May the nectar sugar produced by flowers such as dandelion, white clover and selfheal can support up to 10 times more bees and pollinators (up to 4000 bees a day!) ¹.

The **#NoMowMay** initiative has also been shown to engage with residents and communities by changing mowing regimes to benefit wildlife species in their own gardens and backyards².

How?

By leaving all general grass areas in parks to grow during the month of May and into the middle of June. Pathways will be cut through the large grass areas to provide walking routes, and borders will be cut surrounding existing pathways.

Multiple signs will be erected at each site and a communications campaign will take place to explain, to Wirral residents and users of the park, the benefits of leaving areas to grow during this period.

Sport pitches, bowling greens, churchyards, cemeteries, play areas, outdoor gyms and formal areas (i.e., Hamilton Square) are not affected and will be maintained as normal.

When?

Mowing will stop on general grass areas in parks from the end of April until the middle of June.

For more information on the campaign visit: [Plantlife Website](#)¹ and [Research Paper](#)²

Trees, hedgerows and woodland

The council have been working with partners and stakeholders to develop a 10-year strategy to consider how we manage and respond to the borough's current trees and the future provision of trees. In the ten-year span of this strategy over 210,000 trees will be planted, at least 21,000 per year. In doing so we will replace many times over the number of trees unavoidably lost. The trees that are planted will see Wirral's tree canopy cover doubled by the time they are fully grown.

We will adopt the principle of 'the right tree for the right place' to ensure the most resilient tree population possible. We will establish a clear picture of Wirral's tree stock and its benefits. We will work constructively with individuals and groups to deliver this vision.

We will adopt the principle of 'the right tree for the right place' to ensure the most resilient tree population possible. We will establish a clear picture of Wirral's tree stock and its benefits. We will work constructively with individuals and groups to deliver this vision.

<https://www.wirral.gov.uk/about-council/climate-change-and-sustainability/trees-hedgerows-and-woodland>

The Parks, Allotments and Countryside service is located in the Neighborhood Services section of the Delivery hub and is specially featured in the Council's Culture Strategy, which itself has 3 main priorities;

1. Promote and celebrate Wirral's parks, coast and countryside for leisure activities.
2. Encourage people to take part in sports, leisure and social activities.
3. Increase pride in Wirral's communities and encourage more residents to volunteer.

In November 2020, a restructure for Parks & Countryside was completed and this has created 6 areas as opposed to 4 in order to improve the service provided by the management and staff to our residents and service users. (See page 29 for the current Parks & Countryside structure)

Vision statement and aims

The Friends of Parade Gardens working in partnership with Wirral Council, local schools, Marine Bowlers and businesses aim to:-

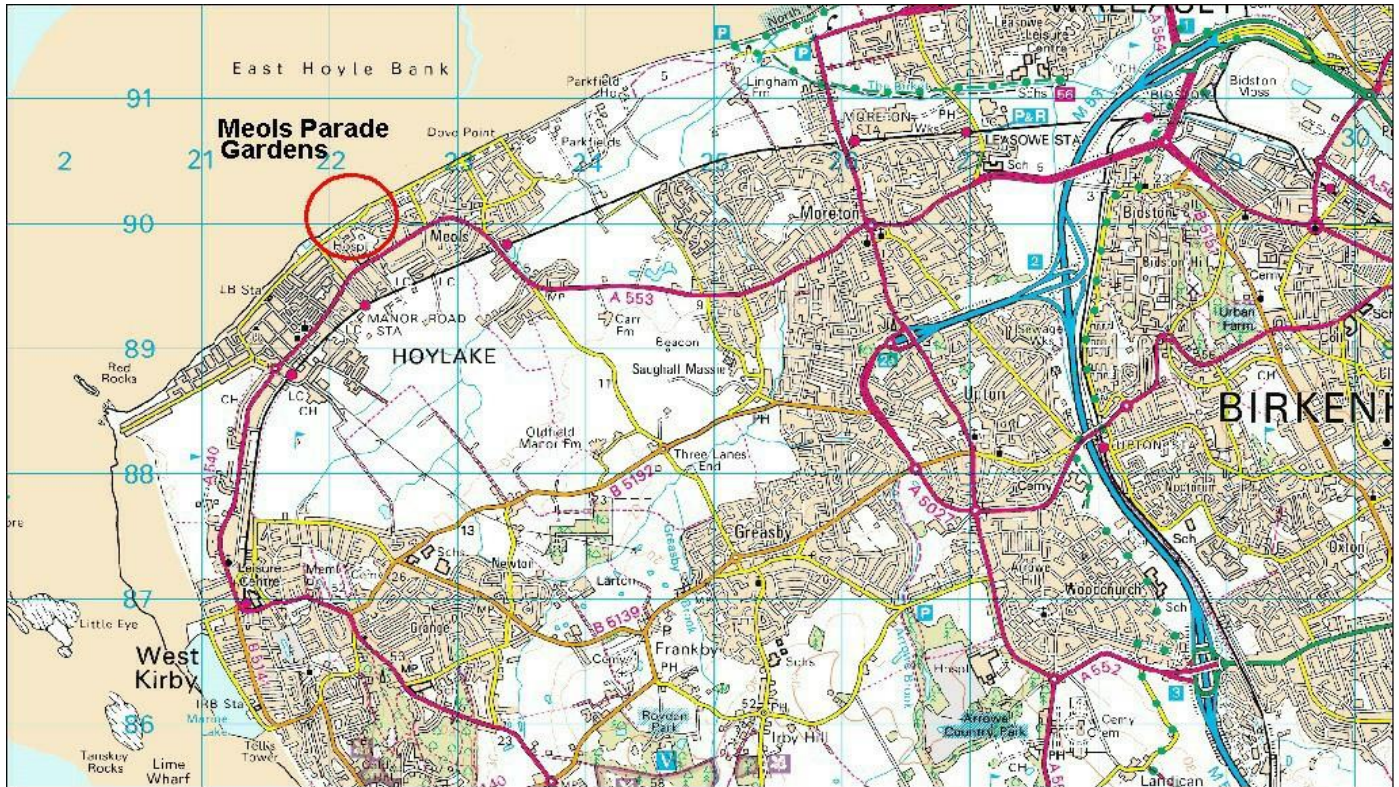
- Create a sense of welcome to the Parade ‘Sunken’ Gardens;
- Ensure a safe and healthy environment within the Gardens;
- Ensure the Gardens are clean and well maintained;
- Ensure the Gardens are managed in an environmentally sensitive way;
- Conserve the historic heritage of the Gardens;
- Encourage community involvement in the Gardens;
- Create effective marketing of the Gardens;
- Implement an effective management strategy for the Gardens;
- Encourage more use of play and sports facilities by all age groups thus maintaining activity and health of all Gardens users;
- Encourage links with Queens Park

Site Information

Typology: Local Sunken Gardens with sports facilities.

Primary purpose: Intensively managed gardens used by local people and visitors alike. Being on the coastal path they are especially popular with coastal walkers, cyclists and runners.

Location plan:



Official site name: Parade Gardens

Site address: Meols Parade Gardens, CH47 5AX

Grid reference: 321949 389841

Ward: Hoylake & Meols

Site overview: A well-used and well-loved local sunken gardens with sports facilities, runs adjacent to the promenade with flower, ornamental grass and sensory planting, amenity grass and opportunities for play and sport.

Size: 1.29 Hectares

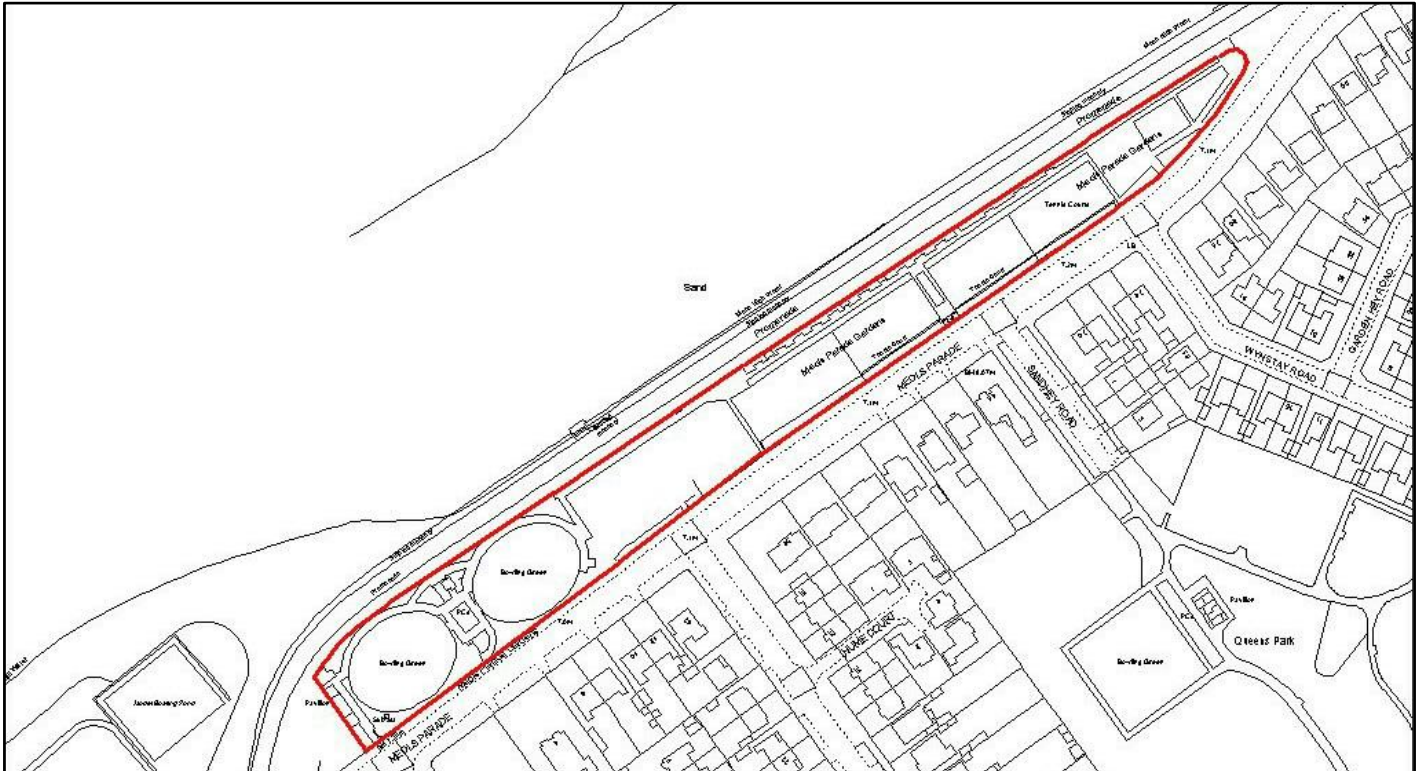
Access:

The gardens are situated on the promenade at Hoylake and Meols. The main entrance is located close to the junction with Hoyle Road. The main entrance is between the two bowling greens and has good disabled access as does the access from the seaward side opposite and the Sensory garden end entrance. The main entrance has an information board. There are eight access points into the gardens with six being on the roadside and two on the seaward side. There is vehicular access at the entrance point opposite Wynstay Road

Tenure and concession agreements:

The site is owned and managed by the:
Parks and Countryside Service of Wirral's Department of Delivery.

Site plan and aerial photo:



© Crown copyright. All rights reserved (licence number 100019803) 2010



Summary of main uses:

Facilities and features:

- Crown bowling green
- Tea kiosk
- Amenity grassland
- 2 x hard tennis courts
- Basketball court
- Grass football pitch
- Public toilets
- Picnic tables and seating
- Sensory area
- Picturesque murals & mosaic
- Privet hedges
- Sensory play items
- Notice boards
- Benches
- Litter Bins
- Ornamental Grasses Bed
- Roses Bed
- 3 x Long Border beds
- 7 x Short Border beds (new)
- Rockery and Gravel bed (new)
- Seaside floral bed
- Grasses & Gravel feature bed

Main activities:

- Tennis
- Football
- Basketball
- Children's play
- Bowls
- Charity events
- Refreshment kiosk
- Exercise
- Passive Relaxation

Community and partner organisations:

- Friends of Parade Gardens
- Friends of Hoylake and Meols in Bloom
- Marine Bowling club
- Everite Windows
- K.C. Mock Painting Contractors ltd
- Local schools
- Wirral Probation service
- Gary Hughes building contractors
- RNLI
- Hoylake Sailing Club

Parade Gardens have an active Friends group who look to organise events, run a tea kiosk, care for the flower and grass beds, apply for funding and receive donations to fund improvements to the site.

The Friends group keep the local community abreast of their vision for the Parade Gardens and progress to date via the Gardens notice boards, their website www.hoylakeinbloom.co.uk and their Facebook page [#hoylakeinbloom](https://www.facebook.com/hoylakeinbloom).

Brief pictorial history of The Parade Gardens



Picture showing sand hills before the promenade and Parade Gardens were built.

After the promenade was built, still no Gardens.



Opening of the Promenade Gardens Hoylake, c.1907



Syd Bird Archives

Work started on the Gardens in 1908 on the land reclaimed after the construction of the promenade. The pictures above shows the huge crowds at the opening and the sand hills that were once so prominent in Hoylake and Meols.



An early aerial view of the Gardens, the outdoor swimming pool can be seen at the far end



In 1912 a bandstand was added and regular concerts started.

In the 1930's a tea-room, stage and larger bandstand were added. Regular dances and stage plays were held for many years including throughout the second world war



The Gardens provided first class tennis and bowling facilities with abundant floral displays throughout.

The cost of maintaining the Gardens to anything like that standard now is completely prohibitive.

There used to be lovely timber shelters all the way down the main walk way.

In the 1960's a new building comprising of an electricity sub station, bowling pavilion and mess room was constructed at the southern perimeter.

In the mid 1980's a new facilities block was built between the two bowling greens including public toilets.



Bandstand comes down at Hoylake



The bandstand and stage have long been demolished along with the timber shelters and most of the wind breaking planting. This has left the Gardens to the sometimes harsh elements of the sea front.

The Friends were set up in 2003 with the aim to secure funding and public support to halt the deterioration of the gardens and hopefully improve them. Since 2006 they have operated a tea kiosk on a Sunday afternoon for Gardens visitors which also helps to raise funds for the various flower beds the Friends maintain.

Green Flag analysis and assessment

The intention is for Parade Gardens to achieve and maintain the standards as defined by the Green Flag Award

Scheme; further details about the scheme are available at www.greenflagaward.org.co.uk

The current condition of the Gardens has been assessed using the following criteria as defined by the Green Flag Award scheme:

- A welcoming park
- Healthy, safe and secure
- Clean and well maintained
- Sustainability
- Conservation and heritage
- Community involvement
- Marketing
- Management

1. A welcoming gardens and sports area

There are 8 access points into the gardens with 6 being on the roadside and 2 on the seaward side. The main entrance is the first entrance past the bowling green near to the junction with Hoyle Road. There is vehicular access at the entrance point opposite Wynstay Road, unfortunately maintenance vehicles using this entrance have no choice but to drive on the grass and footpaths resulting in ongoing damage to both.

The gardens are situated within walking distance of Meols and Manor Road train stations and local bus routes. They also run parallel to the Wirral Coastal walk providing an ideal stopping off place. Ample promenade car parking is available.

Information and Signage

There is a prominent site name sign at main entrance with lesser site name signs at the smaller entrances. The main entrance has an information board displaying details of the Friends groups activities including dates of regular gardens flower/grass bed tidies and litter picks. Also included on the notice boards are contact details of the Friends group and various council contacts.

There is no direction signage to the gardens or indication that there are sports facilities from the main road or along the promenade. It is the Friend's aspiration to improve tourist signage to the gardens from Birkenhead Road and from each end of Meols Parade.



Access for all

There is good disabled access at the main entrance and from the seaward side opposite, also there is a double slope entrance at the sensory area of the gardens.

Public toilets

The toilets including disabled are adjacent to the main entrance and maintained by Wirral Council.

Tea Kiosk

The Friends staff the Tea kiosk on a Sunday afternoon and on special event days to raise funds for the floral displays and to improve the Gardens.



2. Healthy, safe and secure

Dog Fouling

We know from the evidence produced from the Wirral Parks Survey (2012) that a dog fouling and dogs off leads are a major concern for park users in Wirral.

Dog fouling in Wirral is controlled under the Metropolitan Borough of Wirral Fouling of Land by Dogs Order 1998, which implements the Dogs (Fouling of Land) Act 1996. It applies to all land within the borough boundaries, with certain exceptions.

There is a “Clean it up” sign on the pathway with a icon of a dog at the main pedestrian entrance and signs also are provided at entrance points indicating the Gardens is a ‘clean it up’ area. Dog walkers are asked to wrap droppings and place in a litterbin. Dog fouling is classified in law as litter for street cleaning purposes, and can be disposed of in Council litter bins. Dedicated ‘dog waste only’ bins are not provided. Many dog walkers do use the Garden’s litter bins for disposal.

Since the introduction of the Anti-social Behaviour, Crime and Policing Act in 2014, the Local Authority has the power to make Public Space Protection Orders, and issue Community Protection Notices. At time of writing this legislation is in its early days, and more details are likely to emerge as the new powers bed-in.

Wirral allocated a new budget for dog fouling enforcement in 2015 which led to the appointment of a dog fouling enforcement team. A £50 fixed penalty notice can be issued to the dog walker or owner. The council can also prosecute and a court can issue a fine of up to £1000.

The council's enforcement officers patrol areas of Wirral where dog fouling is of particular concern. Members of the public can report a place where dog fouling is a real problem, and the information is used when deciding where to focus patrols in the future.

Members of the public can report dog fouling via the online form here:

<https://www.wirral.gov.uk/environmental-problems/street-care-and-cleaning/dog-fouling>

Wirral’s Community Patrol Officers are authorised to issue Fixed Penalty Notices.

Anti-social behaviour

Wirral Council operates a 24 hour Community Patrol force who respond to concerns regarding anti-social behaviour on Council owned land. The Patrol can be contacted on: 0151 666 5265.

Incident reports compiled by Wirral Council’s Community Patrol are made available to the Parks and Countryside Service.

Graffiti checks are carried out by Parks and Countryside Staff and/or the Friends, and graffiti is removed as a matter of urgency.

Motor vehicles

There are no known issues with motor vehicles in the Parade Gardens.

The Gardens are overlooked by private housing on the road side. This contributes to making the Gardens a safe place.

The Gardens are open, as befits its coastal location, and appropriate sight lines are clear which helps to maintain a sense of personal safety in the Gardens.

Pathways, pedestrian routes

Paving footpaths across the site are generally in need of some updating.

First Aid

First Aid provisions are held in the Friends of the Gardens tea kiosk.

Provision for health

The Parade Gardens is not classed as a 'park' and therefore does not have conventional children's play equipment but does have sensory play items provided by the Friends group. These sensory items are suitable for the very young and are also wheelchair accessible, such as talking flowers, a rain wheel and sensory ocean finger maze.



There are also:

Two tarmac tennis courts

A basketball court

A well used grass 5 a side football pitch

A crown bowling green



Wirral Council offer for the tennis courts to be reserved by making a booking on-line. This is a free service and encourages people to attend as they are assured they can make the arrangements with friends and family to be guaranteed to play on the numbered court for their session.



The Lawn Tennis Association (LTA) ran very successful, well attended free tennis lessons on the Parade Gardens tennis courts.



Marine Bowlers are an active bowling club with a good membership. The Crown bowling green is in regular use for home and match bowling events. They use a building alongside the green as their clubhouse and have carried out considerable renovation with the help of local grants and businesses.



Dog-free and smoke-free areas

Currently there are no smoke-free area's in the Parade Gardens except for the Friends refreshment kiosk.

The 5 a side football pitch is designated as a dog free area by way of signage.

3. Clean and well maintained

Horticulture and Trees

Appendix (a) displays the site elements table and schematic plans.

Horticulture and tree maintenance in the gardens is the responsibility of the Parks and Countryside General Parks Manager (North Area) and the Friends group have taken over most of the flower and grass beds, creating many new ones. The Friends group hold regular flower & grass beds work parties to care for and continually improve them.

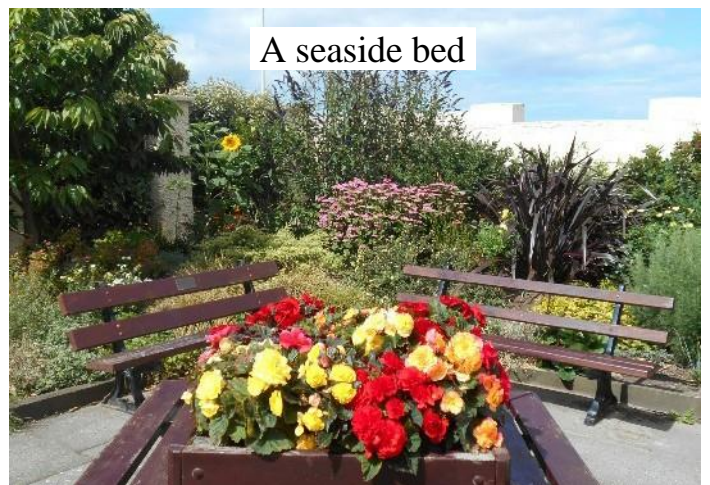
As mentioned previously, the winter works programme will be very beneficial to the volunteer group to ease the volume of maintenance during 2022.

The grounds maintenance duties are carried out as laid down in the Parks and Countryside general service requirements (appendix b) by a dedicated team who attend mainly to Meols & Hoylake Parks & Countryside sites.

Below are some of the Friends of the gardens flower and ornamental grass beds created over the last few years to increase the attractively of the gardens.



3 x long beds against seaside wall



A seaside bed



A Ornamental Grasses bed



Grasses & gravel feature bed

Seating with sensory planting



Nepeta and Roses bed



Tree Inspections

Vulnerable trees are identified by Tree Inspection Officers as part of patrols and reported to the General Park Area Manager, whereupon urgent safety work is carried out directly as needed.

Conservation and amenity tree work is carried out where resources allow, by the Meols & Hoylake team as part of the winter works program.

For details on council owned trees near to or overhanging private property, please refer to the council's policy published on the council website available at:

<https://www.wirral.gov.uk/parking-roads-and-travel/road-maintenance/trees-along-road>

Sensory play equipment (provided by the Friends group)

The sensory play equipment is inspected & maintained by the Friends of the Gardens.

Hard and soft landscaping inspections

Council staff whilst carrying out routine jobs can identify defects within the park that present a safety problem for staff, users and adjacent residents. The following items are appraised:

1. Paths, steps, ramps
2. Walls, fences, gates
3. Buildings
4. Furniture – signs, seats, litter bins
5. Soft landscape – grass, planted areas
6. Trees

Members of the Friends group also report problems to the appropriate council departments, they provide an 'eyes and ears' service which supplements the work of paid staff, and represents a valuable contribution to the running of the gardens.



Buildings

Wirral Council's Asset Management team are responsible for maintenance of the buildings onsite, cleaning and maintenance is carried out by Parks and Countryside staff and/or the Friends.

4. . Sustainability

Energy and Water consumption and emissions

Water and energy consumption is monitored and where necessary modification is made to minimise wastage, achieving economies in usage in line with the Council's Environmental Policy.

All vehicles and plant have comprehensive maintenance regimes carried out by operational support services and the Parks Service workshop technicians.

Tractor and mowing equipment are checked for emission levels.

Chemical use

Chemical storage and usage complies with requirements as defined in the current pesticide handling legislation. Control of Substances Hazardous to Health (COSHH) assessment records of all chemicals are retained at Leasowe Castle Depot.

Parks & Countryside have an agreement for Glyphosate to not be applied in any parks and open spaces in order to not have an environmental impact. The exception is when treating an invasive species, where there is a separate policy in place. There has been a combination of manual removal of weeds and application of acetic acid, which is a natural substitute although not as effective long-term so will require more applications

Green Transport

The site is accessible to cycles, and cycles are used in the gardens, but cycling is not pro-actively encouraged because of potential conflict with small children and dogs.

Waste Recycling

Large Green waste from the Gardens is taken to the local depot and chipped for re-use. Small green waste is composted on site by the Friends group.

Recycling bins are not provided at the site, however, the Friends do have recycling bins for when the tea kiosk is open. Recycled waste from the tea kiosk is either taken home to place in home recycle bins or to the local recycling centre.



Peat is not used at the Gardens.

5. Conservation and Heritage

Built conservation

Much of the built environment from the creation of the gardens in 1909 has now been lost. There were timber shelters with seating along the seaward wall which were removed due to pressure from local residents, with hindsight, they would now be an asset. Also wind break hedges and sand blocks have gone.

The seaward boundary wall has been neglected for many years with little or no maintenance carried out. The Friends of the gardens have made terrific strides in the renovation of this wall by carrying out repairs, re-rendering and painting sections as funds allow.

The old bandstand area has been left neglected with just some of the original walls left. An ideal area for future development.

Originally there were two crown bowling greens but due to pressure on council funds one has been left to become a green space and no longer used for bowls

Historic photographs are being collected by the Friends for display on their website:

www.hoylakeinbloom.co.uk



Some before and after pictures of the Friends seaward wall renovation



Nature Conservation

Along much of the gardens rear wall privet hedges have been preserved which present a good home for wild life and bird activity.

The Friends ornamental grasses beds mixed with wild flowers provides a wonderful habitat for our bees.

6. Community involvement (extract taken from the Friends management plan)

The role of stakeholders

The Friends of Hoylake and Meols in Bloom have been involved in the Parade Gardens since 2003 with the aim of reversing the neglect of the Gardens. The Friends started with the opening of a tea kiosk for Gardens visitors and to raise restoration funds.



The Friends aim is to make Hoylake and Meols a beautiful place to live, visit and play by planting and caring for the many floral displays in and around town, including our parks and open spaces, thus enhancing the environment.

The Friends are also supportive members of the Wirral Parks Forum and West Wirral Community Network.

In January 2016 the Friends created a new sub group 'Friends of Parade Gardens' to concentrate on the full restoration of the Parade Gardens.

The group supports Wirral's Parks and Countryside Service and Asset Management Team in their day to day running of the Gardens.

The group have taken a lead in making capital improvements to the Gardens infrastructure and horticulture, and their aspiration is to increase their involvement in the management and maintenance of the Gardens.

Wherever possible the Friends involve local schools in the Parade Gardens under the guidance of the Friends.

Marine Bowling Club have a separate club house alongside the single bowling green.



Local school children designed a mosaic for the Gardens depicting the area they live in.

The children then helped in the planting of the sensory seating surrounding the mosaic.



Friends volunteers installing 7 large murals by Barbara Singleton, they are a clever merging of old and new photographs plus some additional painting. These compliment the mosaic making this area of the gardens a very popular place to visit. The whole area is wheelchair friendly which adds to its attraction for those less able.



Before re-turfing

The Royal Liverpool Golf Club re-turfed the 5 A Side football pitch goal mouths for us, although consideration should be made for the pitch to be a hard wearing multi-purpose surface.



After re-turfing



The Friends volunteers carry out monthly beds tidy and litter picks.



Local windows firm 'Everite Windows' installed a new tea kiosk serving window



Local painting business K J Mock has carried out all of the painting on the newly restored walls.



Local builder Gary Hughes as well as completing paid work has also given considerable amounts of unpaid time.



Friends of Parade Gardens Horticultural activity



Volunteers created the new seaside bed from what was a green waste dumping area.

This bed is opposite the Friends kiosk making an attractive seating area to have a cuppa.



Volunteers created 3 'Long' beds to make the rear pathway attractive to walk along.



Volunteers created these ornamental grasses and wild flowers beds which the bees just love.



Volunteers created this Grasses & gravel feature bed to link the mosaic with the murals.

It is planted with a wave of ornamental Molinia Grasses along with Valerian, Thrift and self seeded Poppies



Volunteers created this Roses & Nepeta round bed at the main entrance to the gardens.



Friends of Parade Gardens Horticultural activity (Cont.)



New in 2018 are seven Short beds in the Sensory Garden area. The beds were created by the Children of Great Meols Primary School as part of their environmental class.



New in 2018, a Rockery and Gravel bed was created with a seaside sculpture 'Adrift'.

It has been planted with native British seaside plants all chosen for low maintenance and minimal water requirement.



7. Marketing

Wirral Parks survey

Past Wirral surveys to find out what visitors think about their parks, beaches and countryside have deduced the following important general information:

Peak times for use are afternoons, followed by mornings and evenings. Evening use is greater on weekdays than at weekends. The majority of visits are from half an hour to two hours. Around one in five people visit for more than two hours.

One sixth of Wirral people visit parks, beaches and open spaces for events. A quarter said more events would encourage them to use these places more.

Less dog fouling and more and better toilet provision stand out as the top two things that people say would encourage them to use parks, open spaces and beaches more, with 53.7% and 46.5% of responses respectively.

Almost three quarters of people rate Wirral's parks, beaches and open spaces as having a very good or good standard of cleanliness and being maintained in a very good or good condition.

It is now proposed to build on the knowledge learned from the consultation by exploring with the Friends group the possibility of a regular visitor survey for Parade Gardens. The Friends currently have plans to start carrying out their own visitor surveys which will be used to learn about Parade Gardens users and their expectations (see appendix e).

It is the Friends aspiration along with the parks service to increase the footfall of the Parade Gardens by linking them to the adjacent Queens park with signage and with direct signage from Birkenhead Road (main road through Meols and Hoylake)

(Queens park is cared for by the Friends of Queens park which is also a sub-group of the Friends of Hoylake and Meols in Bloom.)

EVENTS

The Friends currently use Queens Park (opposite Parade Gardens) for events but have aspirations to hold sports and music events in Parade Gardens once its sports facilities are upgraded and we have a bandstand or stage reinstated.

8. Management

The General Parks Manager for North Wirral district is responsible for the management of the park, in partnership with the Friends of Parade Gardens. It is the intention for the General Parks Manager and Team Leader to meet with the Friends group at reasonable periods, to review progress with the management plan, as part of the Green Flag application process and general management of the Parade Gardens. The management plan will help to inform staff and members and the public about the aspirations Wirral Council and The Friends group have for the future development and maintenance of the Gardens.

Staff and their functions

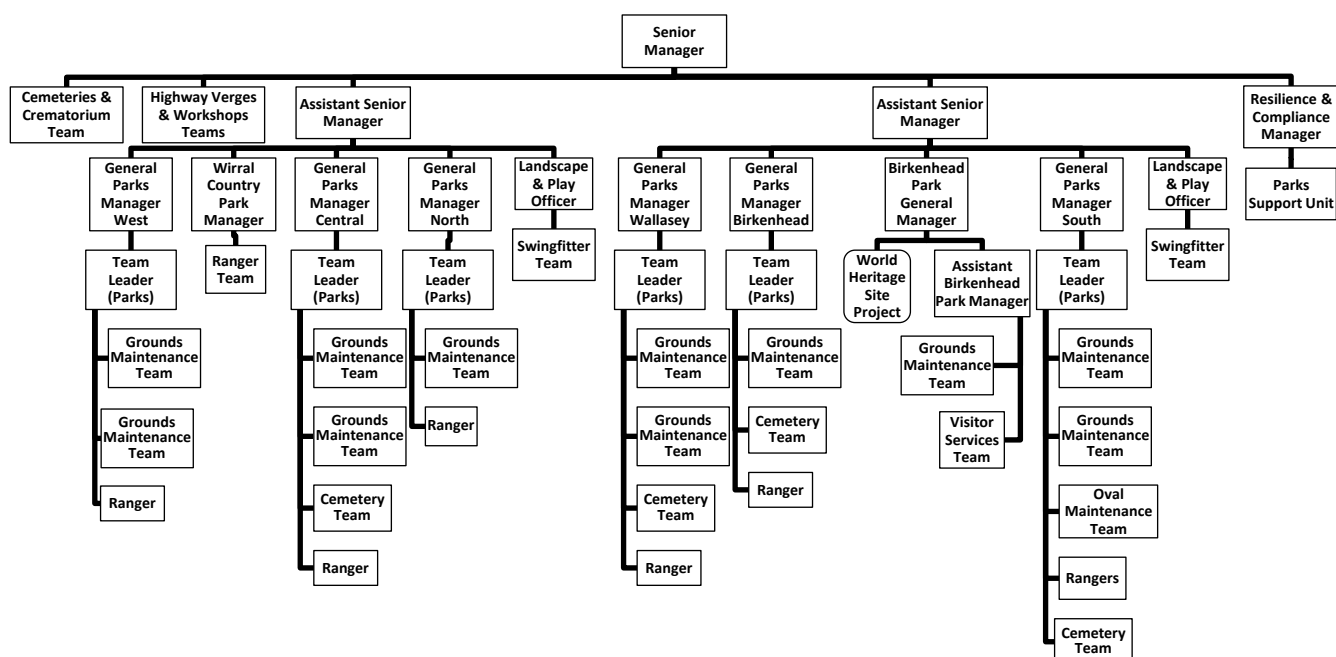
A team of mobile gardeners maintain the park, assisted by a gardener using tractor-mounted equipment to mow the larger grass areas.

A tree team visits the park to undertake seasonal specialist tree pruning and felling work.

The Parks and Countryside Service like other public services around the country is experiencing budgetary pressure and face challenging times to deliver service improvements.

Enquiries about the management of the park should be directed to the North Wirral General Parks Manager on: 0151 606 2004. Email: Streetscene@wirral.gov.uk

Current Wirral Parks and Countryside structure (Nov 2020)



Action	Who	Target date	Resource	Action completed
A welcoming place				
Look at pedestrian signage from Birkenhead Road & Queens park	Area manager, Friends	2018/9	To be identified	Partly done in 2018 look to complete in 2019. Funding would be required
Continue to hold monthly flower and grass bed tidies & litter picking	Friends	Ongoing	Friends	2017 ✓ 2021 ✓ 2018 ✓ 2019 ✓ 2020 ✓
Continue with rear wall renovation making the Gardens visually more attractive.	Friends	Ongoing	Friends, grants, donations	2016 ✓ 2017 ✓ 2018 ✓ 2019 completed
Look to make Gardens entrances more attractive by repairing & painting	Friends	2018	Friends, grants, donations	2017 1 entrance done 2018 All done in 2018
Look to provide information boards along pathways	Friends	2018	Friends, grants & donations	Information boards to hold signs
Provide welcoming signage at all Gardens entrances	Area Manager	2018	Council £1,802.40	New Signage fitted throughout the Gardens in 2018
Repair/renovate steps between tennis courts	Friends/Area manager	2018	Friends/Council £700	Completed by Friends 2018
Healthy, safe & secure				
Signs asking dog walkers to 'pick up' around the Gardens and at entrances	Friends/Landscape officer	2017	Friends/Council	2016 ✓ 2020 ✓ 2017 ✓ 2021 ✓ 2018 ✓ 2019 ✓
Continue with rolling programme to repair & improve pathways	Friends/Landscape officer	2018	Friends/Council	2016 ✓ 2020 ✓ 2017 ✓ 2021 ✓ 2018 ✓ 2019 ✓
Retain links with LTA and local schools	Friends	2017	Friends	2017 ✓ 2020 ✓ 2018 ✓ 2021 ✓ 2019 ✓
Look to install gates on vehicle entrance	Friends/Landscape officer	2018	Friends/Council	Completed by Friends 2018

Action	Who	Target date	Resource	Action completed
Clean and well maintained				
Continue to hold monthly flower and grass bed tidies & litter picking	Friends	Ongoing	Friends	2016 ✓ 2020 2017 ✓ 2021 ✓ 2018 ✓ 2019 ✓
Re-stain all benches on a rolling programme	Friends	Ongoing	Friends	All completed by Friends 2018
Look to update courts and netting	Area manager/Friends	ASAP	S106 funds	Works complete in 2020
Continue to hold monthly flower and grass bed tidies & litter picking	Friends	Ongoing	Friends	2015 2016 2017 ✓ 2021 ✓ 2018 ✓ 2019 ✓
				✓
Sustainability				
Construct compost bays to recycle and reuse green waste	Friends	ASAP	Friends/Grants	2 x Compost bins installed by Friends 2018
Aim to reduce & source plants in peat free compost	Friends	Ongoing	Friends	Ongoing
Aim to eradicate spraying	Friends / Area manager	Council policy for no Glyphosate	Friends / Area manager	Complete
Conservation and heritage				
Continue to assemble collection of historical information and photographs	Friends	Ongoing	Friends	2016 ✓ 2017 ✓ 2018 ✓ 2019 ✓
Publish Gardens history on-line	Friends	Ongoing	Friends	2017 ✓ 2018 ✓ 2019 completed
Look to install historic picture & information boards throughout the Parade Gardens	Friends	2018	Friends	2019 Completed
Continue to renovate more sections of rear Gardens wall	Friends	Ongoing	Friends	2017 ✓ 2018 ✓ 2019 completed

Action	Who	Target date	Resource	Action completed
Community involvement				
Support Friends group	Area manager	Ongoing	N/A	Ongoing
Work with the LTA to promote use of the tennis courts	Area manager, Friends	Ongoing	Volunteer & area manager time	Ongoing
Continue to work with local schools	Friends	Ongoing	Friends	Ongoing
Marketing				
Launch Parade Gardens website and keep updated New website <i>www.hoylakeinbloom.co.uk</i>	Friends	2016	Friends	2017 ✓ 2018 ✓ 2019 ✓ completed
Design a survey of Gardens users and non-users, find out what people think about the Gardens and what improvement or additions they would like	Friends	Begin in 2018	Friends	2017 ✓ 2018 ✓ 2019 completed
Install new notice board adjacent to the Friends tea kiosk	Friends	2017	WWCG	Completed
Update information on Council website	Area manager	2018	N/A	2018 ✓ 2019 ✓ 2020 ✓ 2021 ✓
Contribute to newsletters	Friends	Ongoing	N/A	2017 ✓ 2020 ✓ 2018 ✓ 2021 ✓ 2019 ✓
Management				
Create and update annual management plan	Friends, Area Manager	2017	Friends, Area Manager	2017 ✓ 2020 ✓ 2018 ✓ 2021 ✓ 2019 ✓
Discuss any Gardens issues at Friends Trustee monthly meetings	Friends	Ongoing	Friends	2017 2020 ✓ 2018 ✓ 2021 ✓ 2019 ✓
To look at how we can reduce spraying throughout the gardens	Friends/Area manager	Council policy for no spraying	Friends/Area manager	Complete ✓
Continue to look for improvements funding	Friends / Area Manager	Ongoing	Friends / Area Manager	2017 ✓ 2020 ✓ 2018 ✓ 2021 ✓ 2019 ✓ ✓

✓

Look to achieving Green Flag status	Friends/Area manager	Ongoing	N/A	2018 achieved 2019 achieved ✓ 2020 achieved ✓ 2021 achieved ✓
--	-------------------------	---------	-----	--

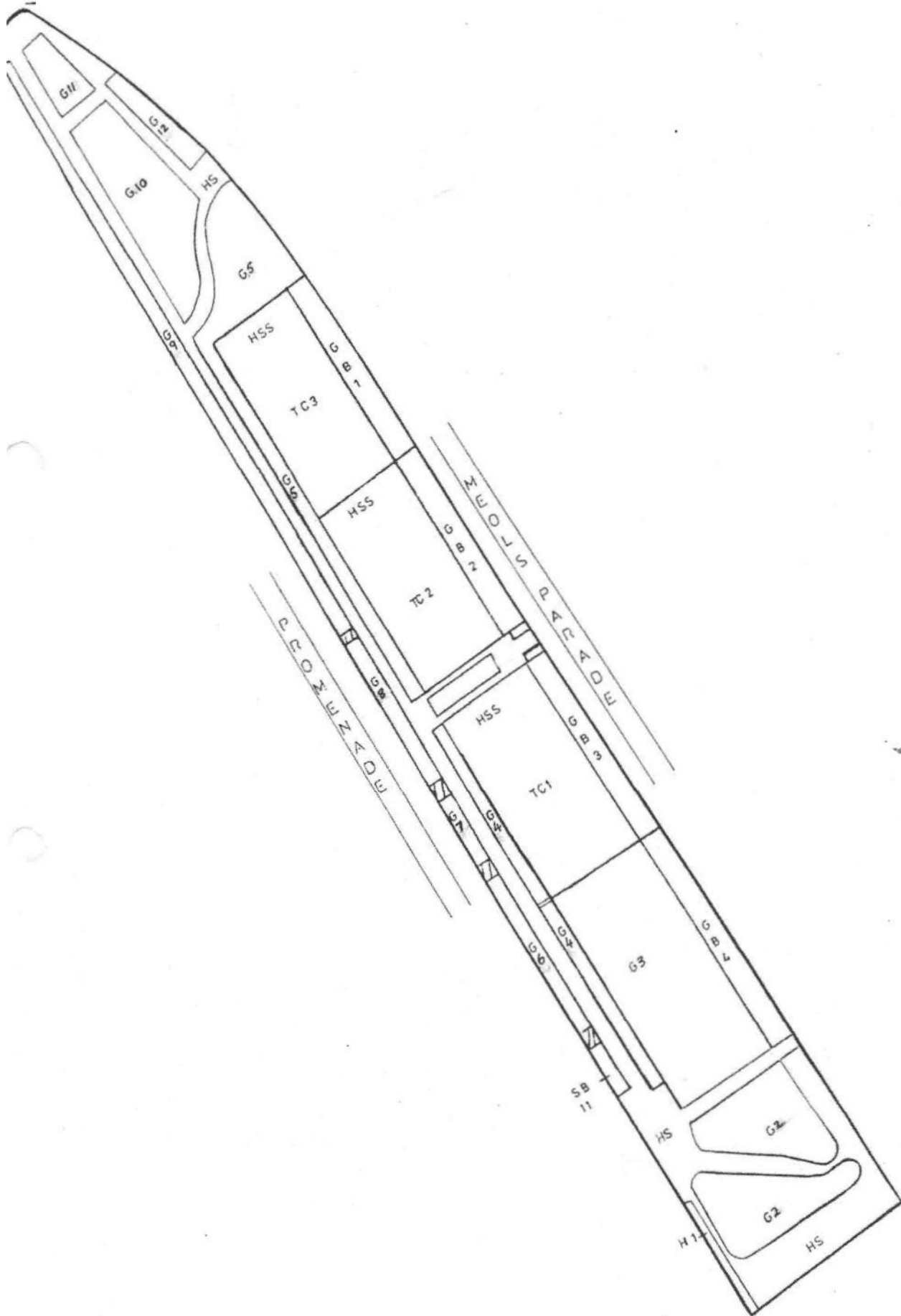
Appendixes

Appendix a) Site elements quantities table and schematic plan

ITEM	QUANTITY	TYPE
Premium Ornamental Grass	305m2	
Ornamental Grass		
General Grass	4665m2	
Rough Grass		
Wild Flower Grass area		
Plying field		
Soccer Pitch		
Mini Socer Pitch		
5 A Side Pitch	1 no.	Grass
Storm Boards		
Summer Sports		
Bowling Green	2191m2	
Putting Green		
Tennis Court		
Cricket		
Hedge two side and top	35m2	
Hedge one side and top	150m2	
Annual Bedding	8m2	
Herbaceous Border		
Rose Bed		
Shrub Bed	473m2	
Hard Surface	2840m2	
Bitumen Macadam Sports	2 no.	Tennis Court
Water Bound Hard Porus Sports		
Plat Area		
Muga/Goal Ends/Kickabout area		
Skateboard Park		
Golf		
Building		
Tree Stock	Yes	

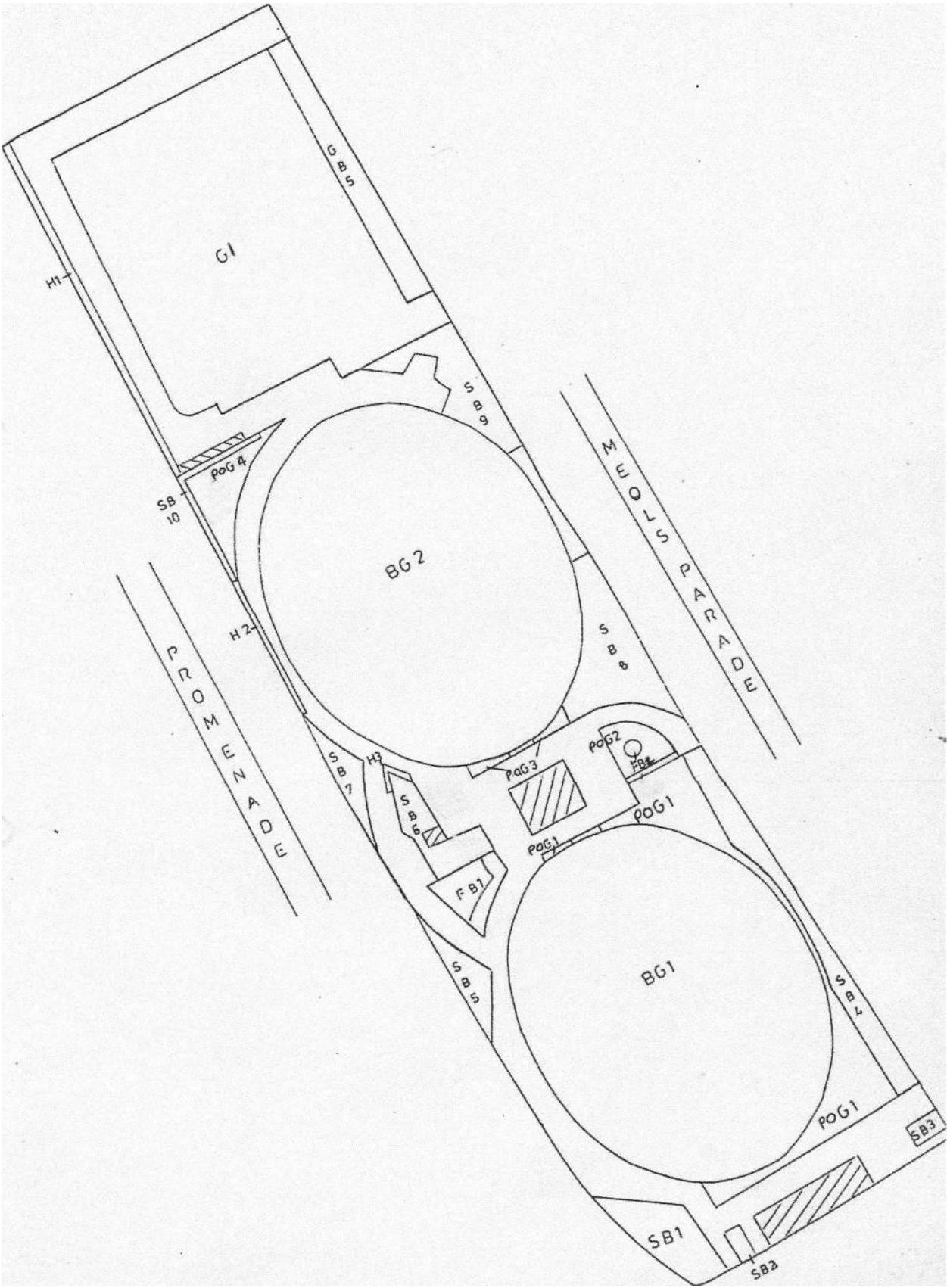
Schematic plan (1)

IHDI rt.PA!c [,Afi[!INS 12!



Schematic plan (2)

M O L S P A : I A O [G A f l O E J I S (1 /



Schematic plan (1 & 2) Zone Tables

Ref.	M ₂	W/F
BG1	1106	
BG2	1085	
POG1	242	-
POG2	16	15
POG3	15	-
POG4	32	-
G1	1020	-
G2	720	20
G3	832	77
G4	158	83
G5	320	112
G6	88	34
G7	48	14
G8	94	34
G9	226	125
G10	286	-
G11	140	-
G12	106	22
GB1	88	40
GB2	99	41
GB3	130	43
GB4	198	45
GB5	112	38
FB1	41	
FB2	15	
SB1	39	
SB2	11	
SB3	10	
SB4	90	
SB5	18	
SB6	54	
SB7	18	
SB8	75	
SB9	84	
SB10	52	
SB11	22	

Ref.	M ₂
H1	48m x 2m x 1/2m 1 S & T
H2	12m x 2m x 1/2m 1 S & T
H3	10m x 1.5m x 1/2m 2 S & T
HSNS	2840
Tennis Courts	2400

Appendix b: Parks and Countryside General Service Requirement

Cleansing: Litter: rubbish and leaf collection

Collect and remove litter and refuse from all of the areas included within this plan. In the case of adopted highway verges this responsibility is limited to the occasions immediately prior to grass cutting activities. Government guidance and Regulations for the disposal of noxious or hazardous waste, for example empty chemical containers or 'sharps' shall be followed.

Inspect and empty all litter bins, and dispose of the rubbish, clear all litter from around each bin.

The Environmental Protection Act 1990 does not specify frequencies and this requires the requisite standards to be maintained by:

- ensuring familiarity with site plans and locations
- programming works effectively
- applying resources appropriately

Litter control shall conform to the Environmental Protection Act 1990: Code of Practice on Litter and Refuse (updated November 2006).

The park shall be maintained to Grade B standard in accordance with the Code of Practice Part 1: litter and refuse

- Predominately free of litter and refuse apart from some small items

The maximum response time to restore to Grade A standard (no litter or refuse) if it falls below Grade B shall be 1 day; this means by 6pm the following day.

Ensure that all staff uses their reasonable endeavours to collect and minimise the effects of litter on the sites, whenever it is encountered in the pursuance of their duties, whether or not those duties are primarily litter control.

Sweeping and cleansing

This requirement is applicable to all surfaces other than grass within all sites. The entire surfaces of all tarmac, concrete or paved areas, rubberised surfaces and tiles, including play facilities and safety surfaces and other surface areas including loose surfaces such as bark and shale shall be kept clear in accordance with the Environmental Protection Act 1990: Code of Practice on Litter and Refuse (updated November 2006) to Grade B standard.

Sweeping, including gutters and drainage channels within the surface areas, shall be carried out by appropriate methods that do not damage or disrupt the surface.

Surfaces shall be washed down whenever necessary in order to maintain a clean and useable area.

All paths and hard surfaces shall be swept at even intervals and be kept cleared of grass cuttings following mowing operations.

All hard surfaces shall be maintained in a substantially weed free condition including moss and algae growth.

Fallen Leaves

Fallen leaves shall be regularly cleared from areas of:

- main entrances and key pedestrian routes and paths › visitors' centres and attractions
- ornamental grass areas
- soft horticultural features such as bedding and herbaceous borders
- surfaces within play areas
- Leaf clearance shall take place so that the features remain:
 - in good horticultural condition
 - and / or with a safe, well drained hard surface

Any leaves that have accumulated into drifts or are unsightly or damaging to plants and bulbs shall be removed as a priority.

The operation shall be carried out frequently throughout the autumn in order to facilitate shrubbery and rose bed cultivation, and to prevent leaves from spreading back onto lawns, paths, hard surfaces, sports and horticultural features. Where necessary, after leaf clearance, beds shall be lightly pricked through to remove footmarks.

The final clearance of all autumn leaves shall be completed by the end of December in each year of the contract period.

Graffiti and fly-tipping

Information on graffiti and fly tipping shall be collected. Data shall provide such data to the Service Manager on a weekly basis as part of his weekly inspection reports.

Data for incidents of graffiti shall include:

- Date
- Location
- Surface type
- Paint type
- Description including offensive characteristics

Offensive or racist graffiti shall be reported as a priority. This shall be reported to the Service Manager within one hour of identification, to enable this to be removed by the Employer's specialist operator within 24 hours.

Fly tipping shall be defined as any single quantity of tipped material that cannot be lifted by two members of staff and removed from the site. If tipped material can be lifted by two members of staff, it is deemed to be covered by the litter control clauses of this service requirement.

All instances of fly tipping shall be reported to the Service Manager.

Grass maintenance

The use of growth regulators will not be permitted.

All grass cutting machinery used across the entire range of standards shall be appropriate and fit for the purpose of achieving the specified standard.

On each occasion that grass cutting takes place the following shall be achieved:

- An even, uniform sward to the requisite height across 100% of the surface area, including all obstacles, grass margins, weed growth, seed and flower spikes and bents.
- Litter on areas to be mown shall be removed immediately prior to mowing.
- Any litter subsequently shredded as a result of the mowing operation, shall be collected and removed

Should grass exceed the maximum permissible height, the grass shall be brought back into conformance by frequent repeat mowing.

The use of herbicides around obstacles and margins shall not be permitted.

The edges of turf adjacent to hard surfaces, cut backs, planted borders, beds, channels and kerb shall be kept maintained to a neat even line as part of the winter works. On each occasion of re-cutting all finished bed edges shall be sharp, neat and vertical.

In the case of ornamental lawns all cuttings, clippings or other mowing arisings, no matter where they fall, shall be removed for recycling or reuse immediately on completion of the operation.

All cuttings, clippings or other mowing arising's across the complete spectrum of grass mowing operations which land on hard surfaces, shrub borders or flower beds shall be cleaned up and removed immediately on completion of mowing.

Arising's that fall on general grass/amenity grass, highway urban verges and rural verges shall not normally require removal, unless excessive growth has occurred, in which case arising's shall be collected and removed for recycling or reuse.

Unless otherwise stipulated in the relevant site management plan, grass areas over naturalised Narcissus, Galanthus and Crocus bulbs etc, shall remain uncut from the commencement of the grass cutting season to the third week in May, unless the bulb leaves have died down sooner, at which time the grass and bulb tops shall be cut and removed and the areas brought into conformance with the surrounding areas. Subsequently these areas are to be maintained to the same standard as the rest of the area.

In drought conditions, subject to the approval of the Area Manager, the height of cut shall be adjusted so as not to cause added stress and damage to the sward. If grass growth is at a standstill an obligation remains to control grass and weed flower spikes by cutting.

On resumption of mowing operations after adverse weather conditions have caused them to cease, ensure that a return to the appropriate standard is achieved by increasing the frequency of mowing.

Premium ornamental and ornamental grass

Premium ornamental areas and ornamental areas shall be maintained so that they are substantially free from weeds, coarse grasses, moss and algae by cultural methods and the application of approved pesticides. Cutting machines shall be cylinder type for fine turf maintenance. For premium ornamental areas the arisings shall be boxed off and recycled or reused. For ornamental areas there is no requirement for boxing off arisings.

All general/amenity grass areas shall be maintained within the optimum specified height range:

- Minimum height 25 mm
- Maximum height 60 mm

Premium ornamental and ornamental grass maintenance shall include all necessary:

- Pest, disease and weed control
- Fertilising
- Scarifying
- Aeration
- Rolling
- Irrigation
- Seasonal renovation
- General/amenity grass

General/amenity grass

All general/amenity grass areas shall be maintained within the specified height range:

- Minimum height 25 mm
- Maximum height 60 mm

Hard landscape infrastructure:

Hard landscape infrastructure: hard surfaces – roadways, pathways, car parks; parks and green spaces site infrastructure – benches, lighting, fencing, walls (see also Cleansing: litter, rubbish & leaf collection)

Undertake a rolling programme of condition surveys of the hard landscape infrastructure of parks, open spaces and other sites.

Hard surface weed control

Continual removal of weeds on all hard surfaces including roads; footpaths, car parks, steps, ramps and bridges Including the bases of all walls and fences where adjoining hard surfaces, along kerbstones and around landscape and park furniture The use of chemical spraying shall not be permitted.

Hard surface gritting, salting and snow clearance

Hard surface gritting, salting and snow clearance is required to ensure that, where reasonably practicable, safe passage along a road or footpath is not endangered by snow ice.

Although there is no requirement to treat all roads and footpaths there are locations where this is required. The sites and areas to be treated are limited to those where essential only access is required to visitor and community centres and known problem locations and hazardous gradients.

Treatment shall include pre-treating to prevent ice from forming and post treating when ice has formed or snow has accumulated.

Benches and Seating

All benches and seating, including picnic benches & tables, shall be kept clean at all times, and in good order through the use of such means as repainting or re-staining surfaces according to type of material.

Fences, railings, walls, gates, handrails, boardwalks, revetments and bollards

Any minor repairs such as loose bolts, protruding nails and sanding of sharp edges shall be undertaken. All other repairs must be reported to the Area Manager.

Defects which represent a hazard that cannot be repaired immediately must be made safe until an effective repair can be undertaken.

Regularly maintain gates, locks and mechanisms to ensure good working condition.

Notice Boards and Signs

Keep all signs, signposts and notice boards clean at all times and in good order through the use of such means as repainting or re-staining surfaces according to type of material of construction.

Shrubs, roses, herbaceous and annual bedding

Maintain shrub beds attractively presented, free of litter, weeds, other unwanted vegetation, and pests and diseases. The use of residual herbicides shall not be permitted.

Shrubs shall be maintained by pruning and training using the best horticultural practices to allow the development of each shrub in keeping with its habit, location and purpose.

Cultivation work in weather or ground conditions that would be harmful to the soil condition and its structure shall not be undertaken.

Observe that the purpose of pruning is to establish a strong framework of branches, keeping the shrubs healthy and vigorous, maintaining the size, shape and balance, whilst ensuring the maximum amount of flowering wood and fruit are produced.

Carry out the pruning of individual shrubs and roses appropriate to the requirements of each species or cultivar.

Annual spring and summer bedding

General requirements:

Herbicides shall not be used in beds that are used for annual bedding Cultivation. Work in weather or ground conditions that would be harmful to the soil condition and its structure shall not be undertaken.

The original shape of the bed shall be maintained and all work performed in a manner that protects the bed and its turf edges.

Replace and clean up any plants damaged by minor acts of vandalism.

Replace any plants damaged during maintenance operations.

Remove all stones, weeds, roots and other debris generated by the cultivation and planting Operations.

Annual Spring and Summer Bedding - Plans and Schedules:

By June of the previous year submit to the Service Manager for approval his proposed schedules of bedding cultivars and designs to be used. This will be based on existing bedding plans and bed Quantities.

Annual Spring and Summer Bedding - Supply of Plants and Bulbs:

Have responsibility for the supply, delivery, quality, quantity and health of all plants and bulbs

- From delivery
- Throughout the distribution and planting process
- Whilst in-situ in beds
- Until the plants are stripped at the end of the appropriate flowering season

Bedding plants shall be high quality fully finished plants, acclimatized and ready to plant out.

Plants shall be well rooted, of uniform growth, and pest, disease and weed free.

Bedding plants shall conform to amc 6 pack size for main bedding plants and amc 9 for all edging plants. Specimen and dot plants shall be in individual pots.

Any plants that are damaged, that die, or are vandalised, stolen or fail to establish, shall be replaced within 48 hours of discovery.

Be fully responsible for the storage and/or disposal of all containers, boxes and pots.

Annual Spring and Summer Bedding - Density of Planting:

On completion, beds shall be fully stocked to sufficient density that the bedding foliage covers at least 80% of the surface area leaving no more than 20% as exposed soil.

Annual Spring and Summer Bedding – Clearance:

The previous season's bedding shall be cleared twice per annum, normally in May and October, when individual spring and summer bedding displays have finished flowering.

Annual Spring and Summer Bedding - Planting and Maintenance:

Bedding plants, including edging plants, specimen or dot plants, corms, bulbs or tubers, shall all be planted in accordance with good horticultural practice.

Planting of all beds shall be carried out within two weeks of clearance of the previous season's bedding.

Plants and bulbs shall be positioned and planted in accordance with the planting Schedules.

Preparation and maintenance for annual bedding displays shall include all necessary:

- Cultivation
- Incorporation of organic matter
- Fertilizing
- Levelling and consolidation
- Adjustment of soil levels
- Irrigation
- Dead heading/removal of dead and damaged foliage
- Weed control
- Staking and tying
- Pest and disease control
- Removal of early flowering bulbs

Hedges – ornamental and non-ornamental

Maintain all ornamental and non-ornamental hedges to their previously cut height, width and shape, ensuring that the top and sides of each hedge are cut neatly so that all growth is removed to the point of the previous cut on the old wood. Maintain hedges to ensure the safe and free flow of motor traffic along adopted highways and other vehicle routes, and to ensure the safe and free flow of pedestrians and cyclists along adopted highway footpaths and all other access routes across sites.

All trimmings shall be removed for recycling or reuse.

The base of the hedge shall be left clean, tidy and vegetation free on every occasion the hedge is cut.

Be aware of his obligations when undertaking any work on or near a highway with regard to public safety and traffic regulations

Planting areas general – replacement, renewal and new planting

Where requested by the Service Manager proposals for replacement, renewal and new planting of shrubs, roses and hedging shall be submitted.

Public Toilets

Wirral Council to be responsible as key-holder for opening, closing and securing the buildings.

Maintain public toilets to a sufficiently high level of cleanliness to protect public health and maintain good appearance.

Toilets shall be kept free from unacceptable odours. All sanitary ware shall be kept free from all, stains; dirt and any build up of lime scale or dry germ. A streak and smear free finish shall be achieved.

Replace where necessary all consumables such as toilet rolls.

Use best endeavours to conserve supplied utilities including electricity and water, and arrange access for the reading of meters by the utility suppliers.

Store all equipment and materials in a safe condition and provide and display the necessary warning signs/barriers to ensure public safety during cleaning operations.

Remove any graffiti as part of the cleaning operation.

Comply with all the responsibilities and requirements on waste collection and disposal.

Inspect the premises after each cleaning operation and notify the Service Manager immediately of any fitting or part of the building requiring repair or replacement.

Trees and woodland

All tree work shall be undertaken in accordance with BS 3998: 2010 'Recommendations for treework'. Be responsible for making all necessary checks to determine if there are any laws and regulations, including Tree Preservation Orders that would affect any work proposed, and to ensure that all permissions and licences are gained prior to proceeding with work.

All persons employed to undertake tree work, shall be suitably trained and qualified and shall be in possession of appropriate certification.

Consider all paths, grassed areas, pavements, kerbs, approach roads, manhole covers, fences, walls, overhead cabling etc that are either adjacent to or on the work area. These are to be preserved in good condition and make all necessary arrangements to make good any damage to the entire satisfaction of the Service Manager.

Include for stump removal and subsequent surface reinstatement following tree felling in highways locations.

Stumps intended for permanent retention should be cut at a specified height and left free from snags.

On completion of all tree work ensure that the work area is thoroughly cleaned and is left in a condition appropriate for its intended use.

All timber and brushwood resulting from tree work shall be disposed of. The only exceptions to this shall be at woodland locations where the Service Manager may instruct timber and brushwood to be retained on site.

The Service Manager may on occasion instruct delivery of brushwood chippings to sites within the Borough where these materials are required for composting, mulching, or creating footpaths or bridleways

All trees and woodland - emergency and out of hours call out service

Provide a 24 hour, 365 days a year, emergency and out of hours call out response service for trees or limbs that have collapsed or are in a dangerous condition. A response unit consisting of a minimum of two suitably trained staff with appropriate vehicle and equipment shall be provided as soon as possible (according to priority in the event of a broad scale incident) following notification of an event by the Service Manager or emergency services authority. Incidents of this nature are often associated with high winds, collision damage, root severance and acts of vandalism.

In the event of severe weather conditions or a major disaster provide additional staff and resources as deemed necessary. At such times maintain radio or telephone contact with the Service Manager's staff so that the staff can be directed to other emergencies as necessary.

Provide sufficient labour, vehicles and equipment required for emergency tree work operations.

Heavy lifting equipment and cranes will need to be obtained as soon as reasonably practicable for special operations.

Trees in parks

Wirral Council have a duty of care to ensure that users of parks, green spaces, cemeteries, churchyards and golf courses and all adjacent land and neighbouring properties are not at unreasonable risk from possible failure of trees. As part of the regular site health and safety inspections assess and act on any tree related risks.

Individual trees in parks and green spaces - arboricultural management

Undertake reactive management of selected trees in parks, green spaces, golf courses, cemeteries and churchyards in response to hazard risk identification, through an agreed programme of work. This may be supplemented by requests/complaints received from members of the public and others.

Individual trees in parks and green space - replacement and renewal

Undertake occasional requests for commemorative and other tree planting within cemeteries, parks and green spaces.

Vandalism and third party damage (see also Cleansing: litter, rubbish & leaf collection)

Work with community stakeholders and partner organisations to reduce vandalism and anti-social behaviour in sites covered by the service.

Soft Landscaping

Rectify minor incidents of vandalism or third party damage to soft landscaping features including trees, planted and grassed areas within 24 hours, inclusive within routine maintenance activities.. This shall include any minor incidents caused by any other source.

Hard Landscaping

Rectify minor damage to fencing, gates, furniture, signage, notice boards, lighting and surfacing and other hard landscaping infrastructure as soon as practicable, inclusive within routine maintenance activities. This shall include any minor damage caused by any other source. Minor damage shall be defined as requiring no more than 1 hour of labour per occasion to rectify with a minimal amount of materials. For more significant incidents of vandalism or third party damage make safe immediately.

Bowling Green

Bowling Green maintenance shall include the following:

- Switching
- Brushing
- Mowing
- Scarification
- Rolling
- Aeration
- Irrigation
- Weed, disease. Moss and pest control
- Fertilizing & lawn sand application
- Solid spiking/hollow coring
- Top dressing
- Worm casting control
- Channel maintenance
- Renovation and over-seeding

All operations shall be carried out in a manner that accords with good green keeping practice in order to maintain the greens free from thatch, weeds, pests and diseases, whilst encouraging the growth of fescue and bent grasses and helping to eliminate annual meadow and other weed grasses.

Bowling green turf grass shall be maintained within the specified height range of:

- | | |
|-------------------------------|--------------|
| ● Mid-October to end of March | 8 mm - 12 mm |
| ● April | 6 mm - 10 mm |
| ● May to Mid-October | 5 mm - 7 mm |

The bowling greens will provide true, level, uniform playing surfaces. All integral landscaped features, green surrounds, surfaces and ancillaries shall be well maintained and safe.

The grass banks and immediate surrounds shall be maintained within the specified height range of:

- Minimum 10 mm
- Maximum 25 mm



Environmental Policy

Wirral Council provides essential services to more than 312,000 residents across a number of key areas and recognises that its activities and services have both beneficial and adverse impacts on the environment.

In working toward a more sustainable future we will:

- Maintain an Environmental Management System which satisfies the requirements of the international standard ISO 14001.
- Comply with all applicable legal requirements and with any other requirements which relate to the Council's environmental aspects.
- Continually seek to minimise negative environmental impacts, prevent pollution and reduce waste during delivery of our services.
- Reduce carbon emissions arising from public sector buildings, operations and service delivery, and encourage others to do so.
- Make use of goods and services which are least harmful to the environment and encourage the use of Fair Trade produce.
- Increase the amount of waste reused and recycled and reduce the amount of waste going to landfill.
- Undertake actions to improve our resilience to current and future climate change.
- Improve the quality and sustainability of the built and natural environment.
- Consider environmental costs, risks and impacts when making planning, contracting, purchasing and operating decisions.
- Regularly monitor and review our environmental performance.
- Ensure that all employees are aware of their environmental responsibilities through communication, training and support.
- Communicate this policy to employees, partners and the public.

**CHIEF EXECUTIVE
WIRRAL COUNCIL**

A handwritten signature in black ink, appearing to be 'P. Ali', written over a horizontal line.

Date: *16th November 2015*

General Statement of Intent

Wirral Council accepts its responsibilities under the Health and Safety at Work etc. Act 1974 and all subsequent regulations.

The council will ensure, so far as is reasonably practicable, the health, safety and welfare of employees, visitors, contractors and any other persons affected by its undertaking.

It is the responsibility of the Chief Executive, to ensure that departments comply with this commitment through the implementation of a robust management system that seeks continual improvement in the health and safety performance of the council.

The council's objectives, so far as health and safety is concerned, are to provide and maintain, so far as is reasonably practicable:-

- Plant, equipment and systems of work that are safe.
- Safe arrangements for the use, handling, storage and transport of articles and substances.
- Sufficient information, instruction and supervision to enable all employees to avoid hazards and contribute positively to their own health and safety at work.
- A safe place of work with safe access to and egress from it.
- A healthy working environment and adequate welfare facilities.

All staff should be aware of their responsibilities contained within this health and safety policy and report any unsafe acts or situations to an appropriate officer.



Eric Robinson
Chief Executive


Date: 25th February 2015

"There is nothing so urgent or important that we cannot take time to do it safely"




Appendix e) List of grants and business sponsorship

Year	Amount	From	Purpose
2013	£31,890	Coastal Town Initiative	Mosaic
2013	£2,000	Hedley Foundation	Sensory play items
2013	£2,000	James Place	Sensory play items
2013	£250	Hoylake Village Life	Plants
2014	£2,000	Public Donations	Sensory seating
2014	£242	Wirral Council	Wild Flower Seeds
2014	£880	Your Wirral	Gardens Signage
2015	£500	Ancient & Royal Golf Asc.	Gardens seat cum planter
2015	£278	Hoylake Village Life	Edging for long beds
2015	£2,360	West Wirral Community Fund	Gardens wall repairs (24 bays)
2015	£1,100	Public Donations	Murals x 7
2016	£400	West Wirral Community Fund	Repair, re-render and paint entrance
2016	£550	Public donations	slope wall
2016	£497	West Wirral Community Fund	Gardening tools
2016	£119	West Wirral Community Fund	Lockable Tea Kiosk notice board
2016	Not known	Everite Windows	New tea kiosk UPVC serving window
2016	£400	West Wirral Community Fund	Part funding to Repair & paint mural
2016	£600	Public donations	end wall
2016	£600	Public Donations	Part funding to Repair & paint mural
			end wall
2017	£600	Public Donations	Repair & paint 4 bays grass bed wall
2017	£987	Co-op Community Fund	Repair/paint 2 large middle wall
2017	£230	Public donations	Sections
2017	£200	Wirral Small Bid Grant	Funds towards new Gardens rockery
2015 2016 2017	Not Known	K.C. Mock Painting contractors	Painting all Gardens wall and entrances renovated by the Friends.
2015 2016 2017	Not Known	Gary Hughes Building contractor	Additional wall repair works carried out in Parade Gardens
2017	£1,050	Co-op Community Fund	General infrastructure repairs
2018	700	Donations & Funds raised from events	Repair/renewal of paving steps
2018	£850	Donations & Funds raised from events	Installation of double gates to the Sensory Garden entrance.
2018	£1200	Wirral Parks Service	Install signage throughout the Gardens
2018	£1100	Co-oP Community Fund	To repair. Re-render four sections of the rear Parade Gardens Wall.

Green Flag information

 <h2>Green Flag Award Mystery Shop Assessment</h2>					
Name of Site	Meols Parade Gardens		Managing organization	Wirral Borough Council	
Weather Conditions	Showery with sunny spells				
Date of assessment	29 October 2021		Time (from – to)	9.50 – 10.30am	
Result: (✓)	Is the site of Green Flag Award Standard? <div> Green <input checked="" type="checkbox"/> Amber <input type="checkbox"/> Red <input type="checkbox"/> </div>				
Grading			Comments and Recommendations		
Please mark each section as Green, Amber or Red If there is no evidence or the section is not applicable mark as NG (not graded) and provide an explanation			Comments should be provided to support each grading *Please include photographs to support your grading where applicable **Please refer to Raising the Standard manual if necessary		
A Welcoming Place					
1. Is the site welcoming?	NG	G	A	R	Number of entrance points, open aspect from roadside.
		✓			
2. Is the site easy to find?	NG	G	A	R	Did not note any roadside signage for anyone not familiar to the area
		✓			
3. Is signage in good condition?	NG	G	A	R	Plenty of site signage.
		✓			
4. Is the site accessible to all users?	NG	G	A	R	Slopes and flat pathways throughout.
		✓			
Healthy, Safe and Secure					
5. Are facilities on site in good and safe condition?	NG	G	A	R	Yes
		✓			
6. Did you feel safe during the visit?	NG	G	A	R	Yes
		✓			
7. Are dogs being controlled and the site free of dog fouling?	NG	G	A	R	No fouling noted on visit. Site being used by dog walkers.
		✓			
Well Maintained and Clean					
8. Is litter, waste and recycling managed?	NG	G	A	R	Very clean, no litter noted and bins serviced.
		✓			
9. Is there a good standard of horticulture maintenance?	NG	G	A	R	Site well tendered by staff and volunteers. Some lovely floral beds & features. Council operatives at time of visit undertaking some hedge works.
		✓			

10. Is there a good standard of arboriculture maintenance?	NG	G	A	R	Site does not have trees
	✓				
11. Are buildings and infrastructure such as walls, paths, steps and structures in good condition?	NG	G	A		Some rendering needs painting next year. The MUGA & tennis court in excellent condition. Good to see the tennis court in use.
		✓			
12. Is equipment used by the public and staff in good condition?	NG	G	A	R	
		✓			
Environmental Management					
13. Is there evidence that the site is managed to have a positive impact on the environment?	NG	G	A	R	Could not locate any recycle facilities. There was a sign advising visitors to take their litter home if bins full.
	✓				
Landscape and Heritage					
14. Are heritage and/or landscape features in good condition?	NG	G	A	R	Some lovely features within the site eg mosaic, seaside based floral displays, mural etc.
		✓			
Community Involvement					
15. Is there evidence of community involvement and engagement?	NG	G	A	R	Yes volunteer group, In Bloom competition, Halloween event.
		✓			
16. Is user feedback positive?	NG	G	A	R	
	✓				
Marketing and Communication					
17. Is there evidence of marketing and	NG	G	A	R	Information within park notice board.
		✓			

promotion, including events? e.g. notice boards, in buildings, website & social media.					
18. Is the correct year flag flying and certificate on display?	NG	G	A	R	There was a flag flying, due to the nature of the exposed location by the beach it was damaged so could not see if it was the current year.
		✓			
Overall Result (✓)	Is the site of Green Flag Award Standard? Green ✓  Amber  Red 				
Additional comments: A - Plenty of seats within the site to extend dwell time. B - The goal mouths of the grass informal mini pitch very worn and waterlogged, would benefit from exploring installation of Astro-turf goal mouths. C - The sensory based play equipment is good.					

Management notes to applicable comments from last Green Flag Assessment

Item no.	Item heading	Green Flag Assessment comment	Parks Manager comment
2	Is the site easy to find	Did not note any roadside signage for anyone not familiar to the area	Noted
11	Are buildings and infrastructure such as walls, paths, steps and structures in good condition?	Some rendering needs painting next year	Management to discuss with friends group to be provided with paint and equipment
13	Is there evidence that the site is managed to have a positive impact on the environment?	Could not locate any recycle facilities	There is no public recycling facilities, although our arisings and any other recyclable materials are taken to the main Depot at Leasowe Castle for recycling
18	Is the correct year flag flying and certificate on	There was a flag flying, due to the nature of the	Green Flag replaced and flying at the park

	display?	exposed location by the beach it was damaged so could not see if it was the current year.	
Additional Comments	B	The goal mouths of the grass informal mini pitch very worn and water logged, would benefit from exploring installation of astro turf goal mouths.	Discussions have been in place for raising funds through the friends group for artificial turf. Will look at rotovating and seeding in spring 2022.

Appendix g) Parade Gardens visitor survey



Parade Gardens Survey

How often do you visit Parade Gardens?	
Daily	
Weekends	
Weekly	
Monthly	
Occasionally	
First time visit	

What is the reason for your visit?	
Exercise	
To Relax	
Enjoying outdoors	
Sport (please specify)	
Taking children to play items	
Walking the dog	
Visit tea kiosk	
Event (please specify)	

How do you usually visit? y	
On your own	
With a friend	
Group of 2-5 people	
Group of 6 or more	
With children	
Without children	
With dog(s)	
With club	

Do you feel safe walking in the Gardens?	
Y/N	
If no what would help you feel safer?	

Do you think the sensory play equipment in the Gardens is adequate?
Y/N
Anything else you would like to see added ?

Any age group not catered for?
And why?

Would you describe the Gardens as: y	
Excellent	
Good but could improve	
Not very good	
Poor	
A disgrace	
Reason for above (optional)	

Over the last couple of years do you think Parade Gardens has: y--	
Improved	
Stayed the same	
Deteriorated	
What in particular has changed?	

What areas of Parade Gardens do you use - v	
All over	
Specific area (Please identify area)	

Do you visit other parks/gardens as well? y	
YIN	
Which are these?	
Is this because:- y	
Closer to you	
Better facilities	
Like a change	
Other reason	

What improvements would you like to see? y	
More seating	
tea kiosk open more	
More signage	
More flowers	
More trees	
Repairs to path ways	
Path edging better kept	
Better toilets	
Disabled toilets	
Events	
A restaurant with sea views	
A Bandstand and Concerts	
A Gardens/park keeper	
Anything else?	
Would improvements encourage you to visit Queens park more often? YIN (circle)	
Improvements -	

Did you know the The Friends Parade Gardens is a sub group of The Friends of Hoylake and Meols in Bloom. YIN (circle)
--

How close do you live to the Gardens y	
5 Minute walk	
10 Minute walk	
Further	
5 Minute car journey	
10minute car journey	
Longer car journey	
Visiting the area	

About you? y	
Male	
Female	
Age group - Under 14	
Age group - 14 - 20	
Age group - 21 - 45	
Age group - 45 - 60	
Age group - 60+	

Did you know the Friends of Parade Gardens have repaired & painted much of the walls, installed the mural's and mosaic, created new flower & grass beds, carry out monthly Gardens bed's tidies & litter picks, run a tea kiosk to raise funds for the gardens. **Y / N** (circle)

Friends of parade garden Friends of Hoylake and Meols in Bloom	
Are you a support member YIN	
Are you a volunteer YIN	
Would you become a member YIN	
Would you like email updates YIN	
Would you like to volunteer with :-	
Flowers / planting YIN	
In the tea room YIN	
On the Friends committee YIN	

Name	
Address	
Email address	Phone number

Appendix h) Project Bank

PROJECT BANK

Project	'Ballpark' cost estimate (inc. Design & contract management)	Justification, policy fit and evidence of need	Outcome
Repair, re-render & paint 24 bays of rear seaside wall	£2,360	To repair part of the rear wall which was in a unattractive and dilapidated state	Completed
Repair, re-render & paint 4 bays of rear seaside wall (behind grasses bed)	£600	To repair part of the rear wall which was in a unattractive and dilapidated state	Completed
Repair, re-render & paint middle walls (ex bandstand area)	£987	To repair part of the rear wall which was in a unattractive and dilapidated state	Completed
Repair, re-render & paint double sloped access walls (both sides)	£950	To repair the entrance to the Sensory area which was in a unattractive and dilapidated state	Completed
Create 7 large mural panel display depicting old and new local scenes.	£1,100	To enhance the attraction of the sensory area of the Gardens by bringing together old & new local scenes.	Completed
Create 3 new 'long flower beds along rear seaside wall.	£300	To break up and make more interesting the long rear Gardens pathway.	Completed
Create a 'Seaside bed' from what was a dumping ground for green waste	£300	To eradicate an eyesore of dumped green waste and to enhance the seating area of the Friends tea kiosk.	Completed
Create a sensory area with a central mosaic surrounded by sensory seating	£31,890	To rejuvenate an unused and derelict part of the Parade Gardens	Completed
Replace to dilapidated picnic tables with new ones	£1,700	Existing picnic tables had rotten timbers	Completed
Install additional seating around Friends tea kiosk	£500	To increase seating area around tea kiosk	Completed
Develop and run a tea kiosk to help raise funds for Parade Gardens	£200	To increase attractiveness of Gardens by providing refreshments.	Completed

Appendix h) Project Bank (continued)

PROJECT BANK

Project	'Ballpark' cost estimate (inc. Design & contract management)	Justification, policy fit and evidence of need	Outcome
Install Sensory play items that were wheelchair accessible	£4000	To provide sensory play items for very young children and those less able.	Completed
Repair, re-render & paint mural end wall	£1000	To repair part of the rear wall which was in a unattractive and dilapidated state	Completed
Repair, and paint main entrance (slope) to Gardens (by existing toilet block)	£200	This main entrance to the gardens look shabby and not very inviting.	Completed
Replace the two deteriorated existing tennis courts with new ones	S106 and Council funding	Existing tennis courts are in a dilapidated state.	Completed 2020
Replace the basket ball court with a new multi purpose games court incorporating disabled access	S106 and Council funding	Existing basket ball court is in a dilapidated state.	Completed 2020
Replace 5 a side football pitch with new all weather court	To be determined	Existing 5 a side pitch is in a dilapidated state.	Fund raising being considered for this item
Install a bandstand and seating area.	To be determined	The Gardens are now popular again and it would greatly enhance them to bring back a bandstand to them.	No current plans (2021)
Create a rockery between the tea kiosk and bowling green.	£600	To create a rockery on a triangular area which has proved difficult to plant.	Completed 2018
On pathways cut grass back to paving edges	Council staff time	Would smarten up pathways and help make them look cared for	Completed 2018
Install large community mural on the 2 large center walls which are already prepared	£3,800	This mural would greatly enhance the center of the Gardens, creating interest and further development	

Repair, re-render & paint all rear seaside wall that has not already been done (48 bays)	£8,000	To repair all rear wall that has not already been done due to its unattractive and dilapidated state	A further 10 bays completed in 2018. Ongoing to complete for 2022/23
--	--------	--	--

Appendix h) Project Bank (continued)

PROJECT BANK

Project	'Ballpark' cost estimate (inc. Design & contract management)	Justification, policy fit and evidence of need	Outcome
Sand down, stain or such like all Parade Garden benches	£50 plus volunteer time	Benches are looking tatty which brings down all we are trying to do in the Gardens.	Completed 2018
Install 'Parade Gardens' welcome entrance signage to all entrances	£1200	There is no signage to say that these are the 'Parade Gardens' and what is in them.	Completed 2018
Repair step entrance between tennis courts	£700	Step paving cracked with poor brickwork, looks unsightly	Completed 2018
Look to paint all painted entrances (2 done)	Council & Friends group provided paint.	Currently painted walls look unsightly.	Completed 2018
Renew worn 'clean it up' floor markings	To be determined	Some floor markings very faded	Completed 2019
Look to install Gardens history boards along gardens paths	To be determined	Would improve attractiveness and awareness of the gardens	No current plans (2021)
Install green waste compositor bins	To be determined	At present green waste from flower and grass beds is tipped.	Completed 2018
Look to improve gardens pathway paving	To be determined	Many parts of existing paving is uneven or cracked and a trip hazard.	Ongoing
Look to re-installing gates on vehicle entrance	£850	Putting gates back would present a more pleasant visible line of outer railings and also offer a safer environment for families with young children enjoying a picnic or using the sensory play items.	Completed 2018
Look to have PG listed on Council's parks web site.	Landscape officer	This will help putting the Gardens on the map and hopefully encourage further investment to bring their standards up.	Completed 2017