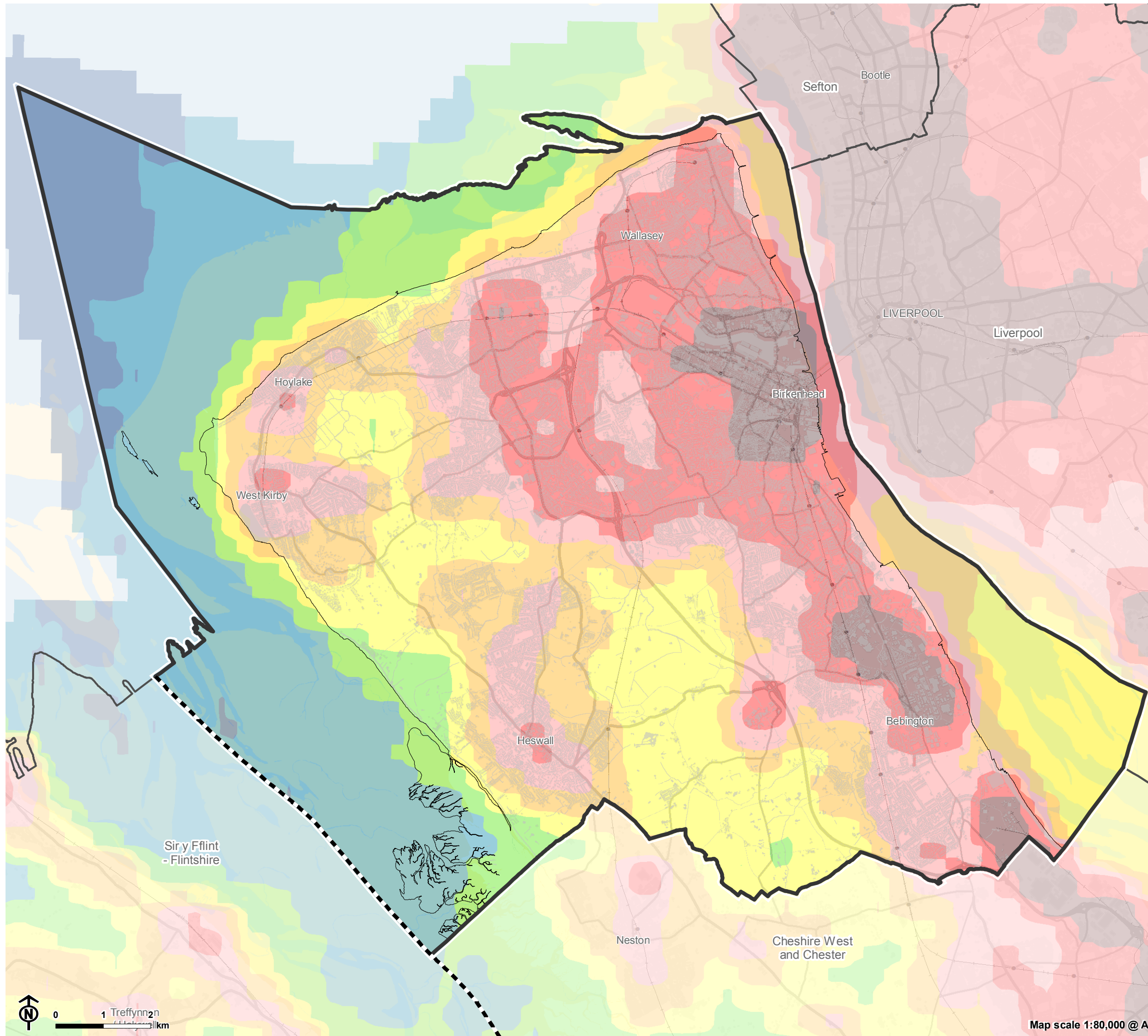


Figure 6.2: 'Night Blight' mapping of light emission in Wirral



- Wirral boundary
 - Other Local Authority boundary
 - England - Wales boundary
 - Landform edge
 - Physical constraint
- Night Blight (NanoWatts / cm² / sr)**
- >32 (Highest levels of light emitted)
 - 16 - 32
 - 8 - 16
 - 4 - 8
 - 2 - 4
 - 1 - 2
 - 0.5 - 1
 - 0.25 - 0.5
 - < 0.25 (Lowest levels of light emitted)

Note
Physical constraints include roads, railways, buildings, water courses, waterbodies, flood defences, areas of coastal erosion and permitted waste sites.

Map scale 1:80,000 @ A3