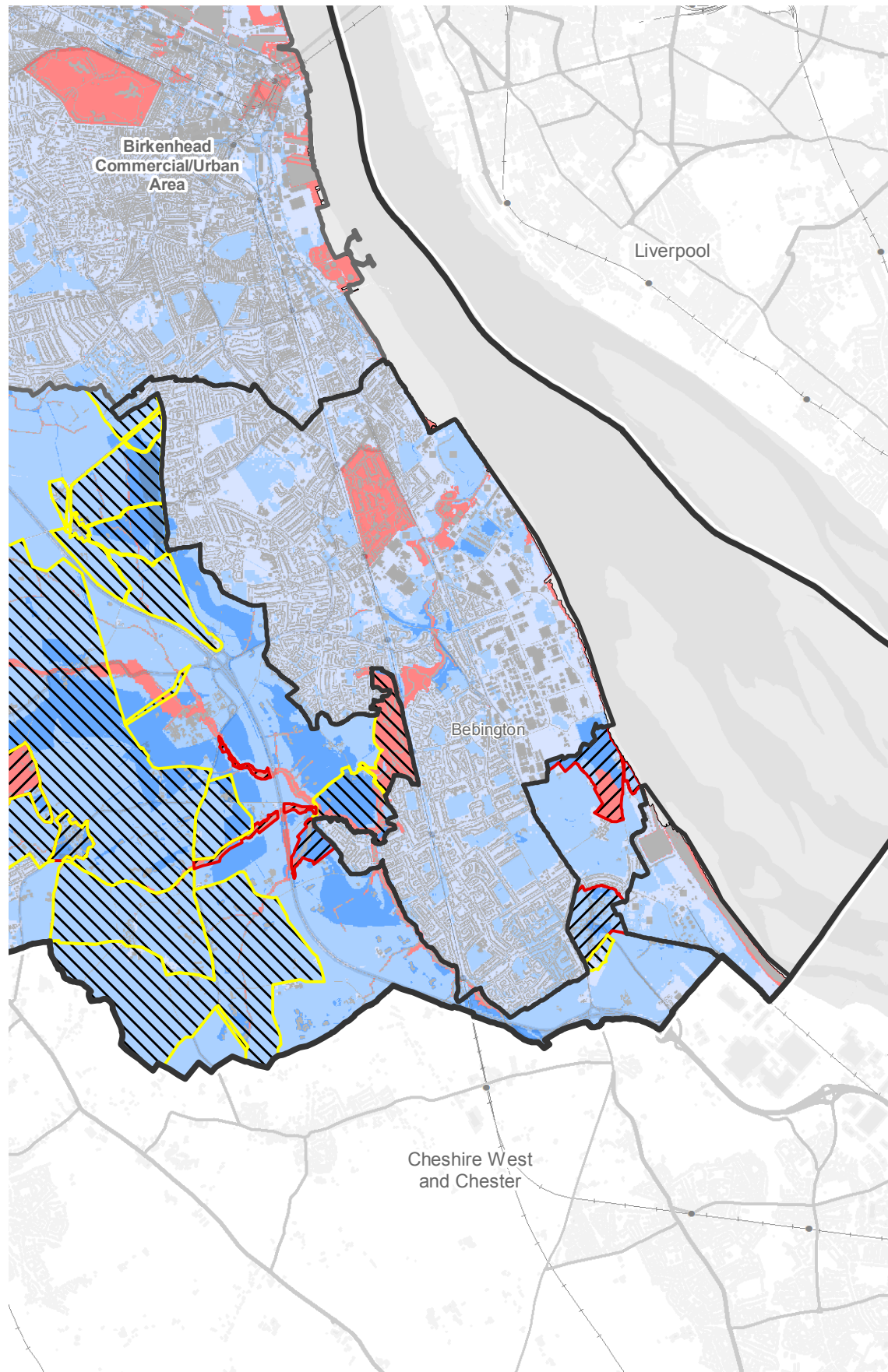


Overall sensitivity



Accessibility

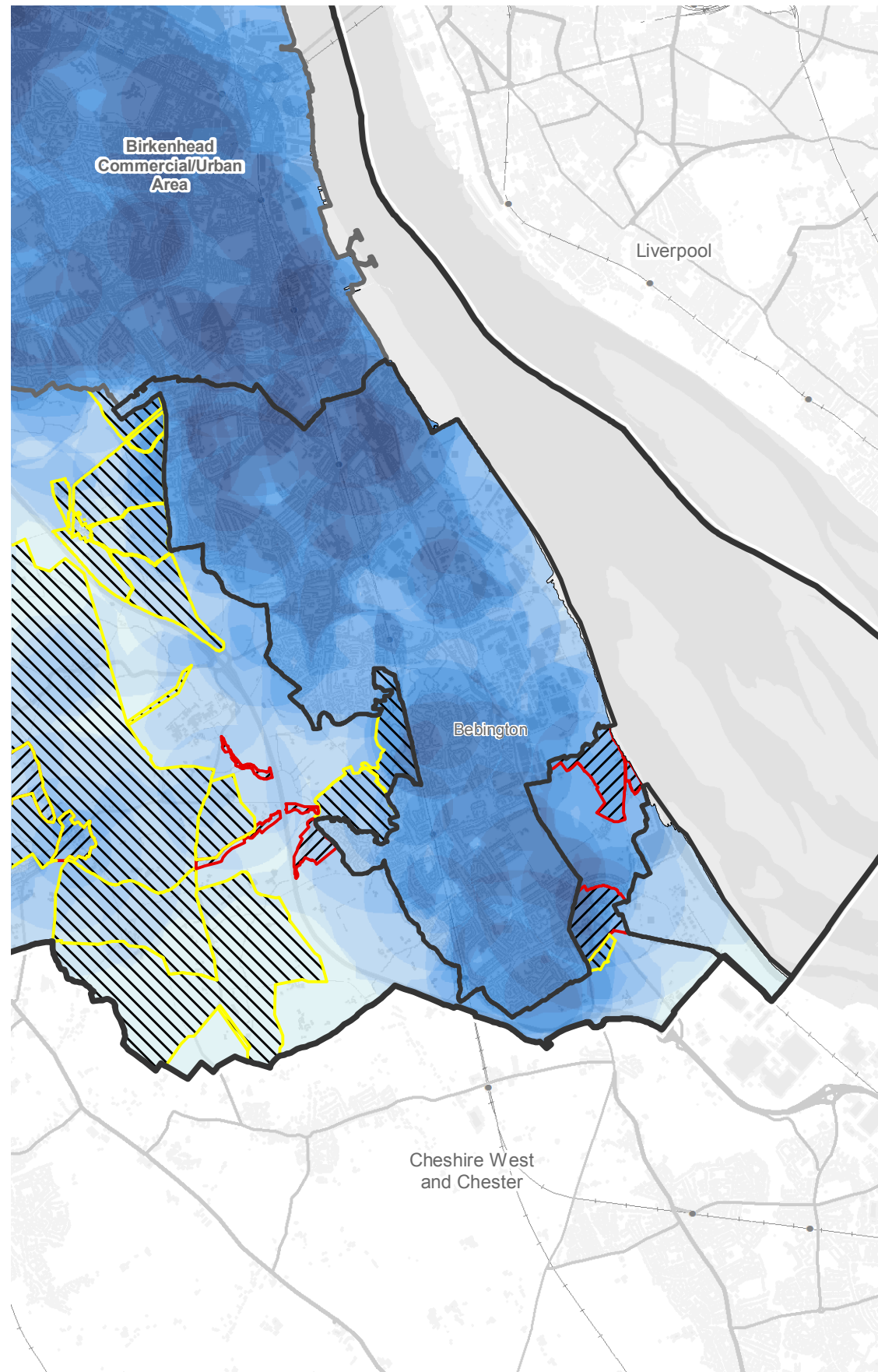
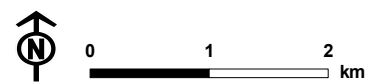


Figure 13.6 Mapping of environmental sensitivity (including landscape) and potential for carbon emissions around Bromborough urban area

- Wirral boundary
- Other Local Authority boundary
- Landform edge
- Bromborough urban area
- Other settlement area
- Physical constraint
- Landscape sensitivity rating**
- High
- Moderate-High
- Environmental sensitivity**
- High
- Moderate (13-15)
- Moderate (10-12)
- Moderate (7-9)
- Moderate (4-6)
- Moderate (1-3)
- Lower
- Accessibility to key services and open space facilities rating**
- Highest accessibility
- Lowest accessibility

Note
Physical constraints include roads, railways, buildings, water courses, waterbodies, flood defences, areas of coastal erosion and permitted waste sites.



Map scale 1:63,600 @ A3