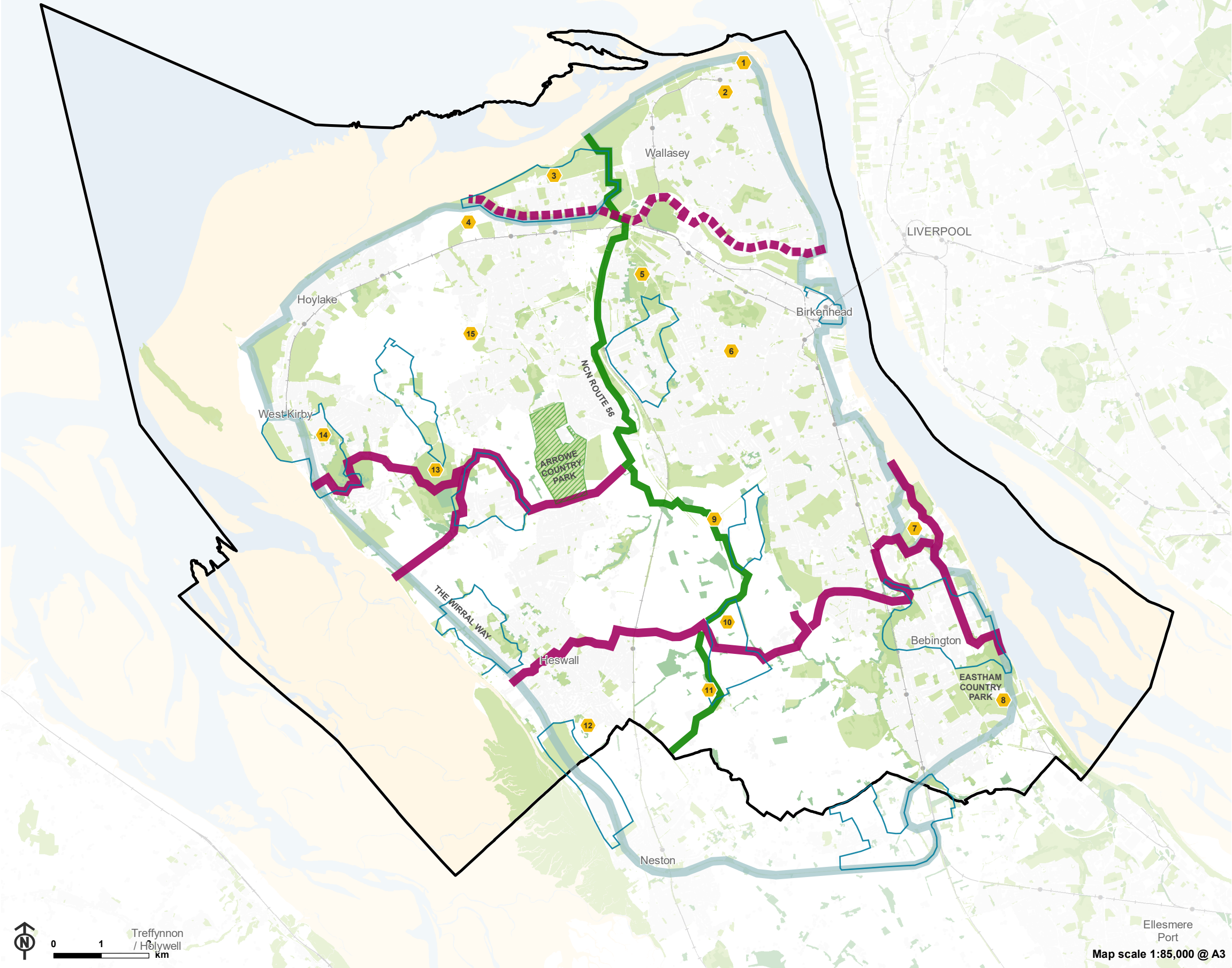


Figure 4.5 Opportunities for the creation of a Super Greenway and relieving Diffuse Recreational Pressure



- Wirral Borough Boundary
- Existing Green Blue Infrastructure asset
- National Forestry Inventory
- Proposed routes to connect east and west Wirral in the development of a 'Super Greenway'
- Proposed route to connect central and north Wirral in the development of a 'Super Greenway'
- Existing NCN Route 56
- Localised Circular Walking Routes
- Wirral Circular Trail
- Specific measures for Arrowe Country Park to improve recreational quality and access to PRoW network
- Local Heritage Sites**
  - 1 - Lighthouse and Fort Perch Rock
  - 2 - Dome of Home, New Brighton
  - 3 - Leasowe Castle
  - 4 - Leasowe Castle
  - 5 - Bidston Lighthouse, Observatory & Windmill
  - 6 - Williamson Art Gallery & Museum
  - 7 - Port Sunlight
  - 8 - Eastham Country Park and Ferry
  - 9 - Storeton Village
  - 10 - Brimstage Hall & Tower
  - 11 - Thornton Manor & Gate House
  - 12 - Gayton Mill
  - 13 - Royden Park
  - 14 - West Kirby War Memorial and Mariners Beacon
  - 15 - Saughall Massie Bridge

NOTES:

The physical location of proposed routes should be determined on the ground following feasibility work. Feasibility work should also include a review of wayfinding and orientation associated with the improved PRoW network.