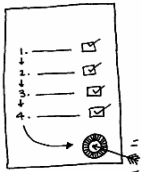


PROGRESS REPORT 13 MARCH 2006

LEARNING DISABILITY PARTNERSHIP BOARD

This report comes out every three months. It is about



Progress with plans



Targets

There is a section for each part of Valuing People:

- Opportunities for disabled children
- Transition into adult life
- Enabling people to have more control over their own lives
- Supporting carers
- Good health
- Housing
- Fulfilling lives
- Moving into employment
- Quality
- Workforce training and planning
- Partnership working



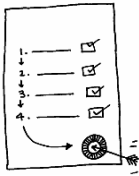
OPPORTUNITIES FOR DISABLED CHILDREN AND YOUNG PEOPLE



117 families now receive Direct Payments. This is 50% more than the average in the NorthWest of England.

Building work on the new shared care provision has now started at Rosclare. This should be completed in May 2006.

Over 30 support packages for children with complex needs have been paid for jointly by the Primary Care Trusts and Children's Services. Children's Services and local health agencies are working together to improve support packages for children with disabilities.



The Children's Plan will be in place for April 2006. Structure for new LDD Strategy Group and the LDD Plan has been agreed.



A Partners in Policy making course has been run. This group will be the starting point for the new Parents forum.



TRANSITION INTO ADULT LIFE

A transition protocol for children leaving care has been written to improve transfers between children's services and adult social care services. This will be ready to present to Select Committee for their approval in the next 2 months.



A new Transition Group has been set up between adult and children's Services. This group will be developing an information leaflet about transition.

Person Centred Planning awareness and facilitator training has been done. Person centred plans are now being done by the children with disabilities team. Together with the 'Learn about me' work introduced by Foxfield School, this will put children at the centre of their plans for the future.

PCP

The children's assessment formats and pathway plans have been simplified.

We hope to hold another Transition Event in June 2006. A consultation session has been held with parent carers to help with the planning of this event.



Children's Services are taking part in the Reviews of Day Services and Short Break Services. This will help to modernise services and change them.

A survey of children with learning disabilities housing needs has been undertaken. This will tell us the numbers and type of housing that will be needed in the next 3 years.



SUPPORTING CARERS

A Service User and Carer Involvement Officer is appointed and will start work in April 2006. Service users and carers were involved in the appointment process.



We will buy 4 places on the regional Partners in Policymaking course. A group of family carers called 'Partners' want develop a network group that will permit them to work with services as equal partners. This will be paid for by the Learning Disability Development Fund. 'Partners' will be supported by WIRED.

We intend to look at how many support groups there are in Wirral.



This information will be put into a new Carers Information Pack. It will also be used to improve the consultation process. This would be particularly useful for older family carers whose relative has now left home. These carers need emotional support as their relative settles in to living elsewhere.

Carers and advocates were involved in the Respite Review

The Care Manager for Older Carers is working on a complete picture of the number of older carers in Wirral in order to plan services in partnership with them. She has met 203 family carers aged over 60.

Of the 175 over the age of 65 who may require short breaks:

- 1 parent over 90 years old
- 5 families with both parents still alive over 80
- 26 single carers over 80
- 27 families with both parents still alive over 70
- 34 single carers over 70
- 54 families with both parents still alive over 65
- 29 single carers over 65

Of these

- 69 people have complex needs.
- 19 also have physical disabilities
- 12 have sight or hearing difficulties.



No black older family carers have been identified. The Care Manager for Older Carers has contacted Wirral Multicultural Organisation about this. No new referrals were received however.

The Care Manager for Older Carers and the Supported Living Development Officer are doing a Housing Needs Survey (see Housing section).



WIRED are being paid to produce a Carers Newsletter in 2006.

The Wirral Carers Strategy and Action Plan was approved by Health and Social Care Select Committee on 18 January 2006.

Advocacy in Wirral has recruited an Advocacy Co-ordinator.

139 Carers have received direct payments, mostly these are one-off amounts. 39 carers are receiving regular direct payments. We are unable to say how many of these are family carers of people with learning disability.



MORE CHOICE AND CONTROL

Developing Person Centred Planning

The Person Centred Planning (PCP) Group now meets monthly. We need to extend the membership of the group and recruit more family members and service users.

PCP The PCP Group is trying to find a way in which we can roll out PCP properly in a meaningful way for people. Barriers include capacity. It is hoped that this will be completed by the end of April 2006. For PCP to produce the changes in services that are needed links have to be made with care planning, commissioning and health action planning. This work will be made easier if the Neighbourhood Renewal Fund bid around Health Action Planning and Person Centred Planning is successful.

The new PCP Team from Riverside Centre is now established. This team needs to link to the task group.

Promoting Advocacy

The Advocacy Group meets regularly to develop the self-advocacy 'Speaking Up' project. The tender is going out in February. We are training up service users so that they can be as fully involved in the tendering process.



The Group is mapping current advocacy support. The group is discovering how many person centred services there are in Wirral. We are trying to develop standards for advocacy services. We will pay extra for person centred services.

Direct Payments

49 people with a learning disability received direct payments in December 2005.



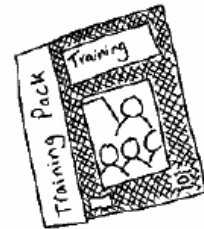
GOOD HEALTH



A bid has been made to the Neighbourhood Renewal Fund for money. This is to pay for additional practice nurse time to help support people with learning disabilities to access health screening in GP practices.

Another bid has been made to the Neighbourhood Renewal Fund for money to include a health person in the new Person Centred Planning Team from Riverside. This will mean that Health Action Plans are included in the Person Centred Plans if the Fund give the money to do this.

A 12 week course on health promotion and health improvement has been delivered at Riverside Centre to 16 people with learning disabilities. 1 member of Riverside staff was involved with the course. This work will be extended to Eastham Centre at the beginning of March 06.

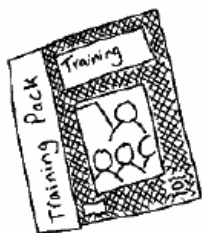


All areas now have Health Passports. We are trying to make sure Passports are available for everybody.

A Health Screening Template has been developed for the Practice Nurse to use during health checks of people with learning disabilities in GP practices. The template will be tried out in West Wirral Group practice starting in March 2006. A lot of effort has been put in during the last few months to make sure the template works.

We are helping family carers and care providers think about health promotion and health improvement.

Health staff are being trained in learning disability awareness.



Everybody can have this training. 8 sessions have been planned for the rest of this year.

The two health facilitators have spent a lot of time improving how people with learning disabilities receive health services. Work has been done with individual people to improve their health journey. Work has also been done with Sure Start with parents with learning disabilities.

Eastham Drama Group is putting on a play about attending an outpatient's clinic at hospital. This will be delivered to health staff during sessions in Spring 2006.

Suzanne Lepts is a community nurse from Ashton House. She has joined Judith Johnson and Linda Swann (health facilitators) in

helping people with learning disabilities get a better service from the NHS.



Michele Bering has joined the health team. Michele Bering is a nurse consultant who does health access and health equalities across Cheshire and Wirral. She supports Suzanne Judith and Linda in their jobs.

Marie Armitage is the new chair of the Health Action Group. Marie is the Director of Public Health for Bebington and West Wirral Primary Care Trust



HOUSING



We need to find a way of making sure assessments from reviews tell us how we can buy our services in a better way and what people's housing needs are.

We are working on the Housing Needs Survey. We are piloting the new carers' assessment with it. The housing needs of people with learning disability living with older carers is being looked at again to see what people's housing need will be in the next 3 years.

Between September 2005 and April 2006 17 people with learning disabilities who were living with older carers have moved into their own home.

A Spring Report based on the results of the Housing Needs Survey will be prepared in April 2006. This will link into the Commissioning Strategy.

A project in Bromborough for 2 people with autism is being developed.



4 people with learning disabilities are moving into shared ownership bungalows. Housing for 2 more people with learning disabilities is being developed under a shared ownership arrangement.

2 bespoke schemes for 2 individuals with complex needs are also being discussed.

12 self-contained flats in Grange Mount, Birkenhead are opening in May 06. This is in partnership with Servite Housing and paid for by the Housing Corporation. Supporting People will meet support costs. This is linked to developments in the Birkenhead area.

Balls Road and Shrewsbury Road flats (part of Social Services supported living scheme in Birkenhead) are going to be improved. We are talking to Wirral Partnership Homes about the best way to do this.

These changes will offer better quality and a wider range of housing choices to people with learning disability on Wirral.

In January 2006 we talked to all the service users living in the Social Services Birkenhead Area Scheme. Most people wanted to stay in the Birkenhead area.



We asked supported living providers to agree to minimum standards in January 2006. Around 50 providers replied. We intend to have a list of approved providers. They will supply quality services.

FULFILLING LIVES



The accessible Enabling Fulfilling Lives Newsletter has been unable to be produced so far. The service users editorial group has been set up.

The first meeting of the Research group consisting of service users, carers, councillors and professionals will meet on 24 February 06. This group to research best practice in the region and benchmark day services.

In order for new day opportunity options to be developed the localities where service users live have to be identified. Some work has been completed on mapping clusters of service users but further work on this area is needed.

Central Park community location is developing well and beginning to become established.



The St Anne's church community venue is developing too. A bid has been made for Single Regeneration Budget money. This will enable partnership work with community organisations including Duke Street Residents Association. We should know by the end of February whether the bid has been successful.

Heswall Centre is exploring a community venue for service delivery.

A small group from Moreton Centre are also exploring a community venue for service delivery. The group consists of service users and staff. This initiative developed from a PATH day.

A draft Service Level Agreement (SLA) has now been developed for use in partnership with community management services. This will

enable funding to be allocated according to individual needs. The draft SLA needs to be talked through in sections. The first step is to involve care management teams and work through referral processes.

The timescale for developing unit costs for day care has slipped.

Work is progressing on using the Race Equality Tool in each service. An action plan for each service will be developed.

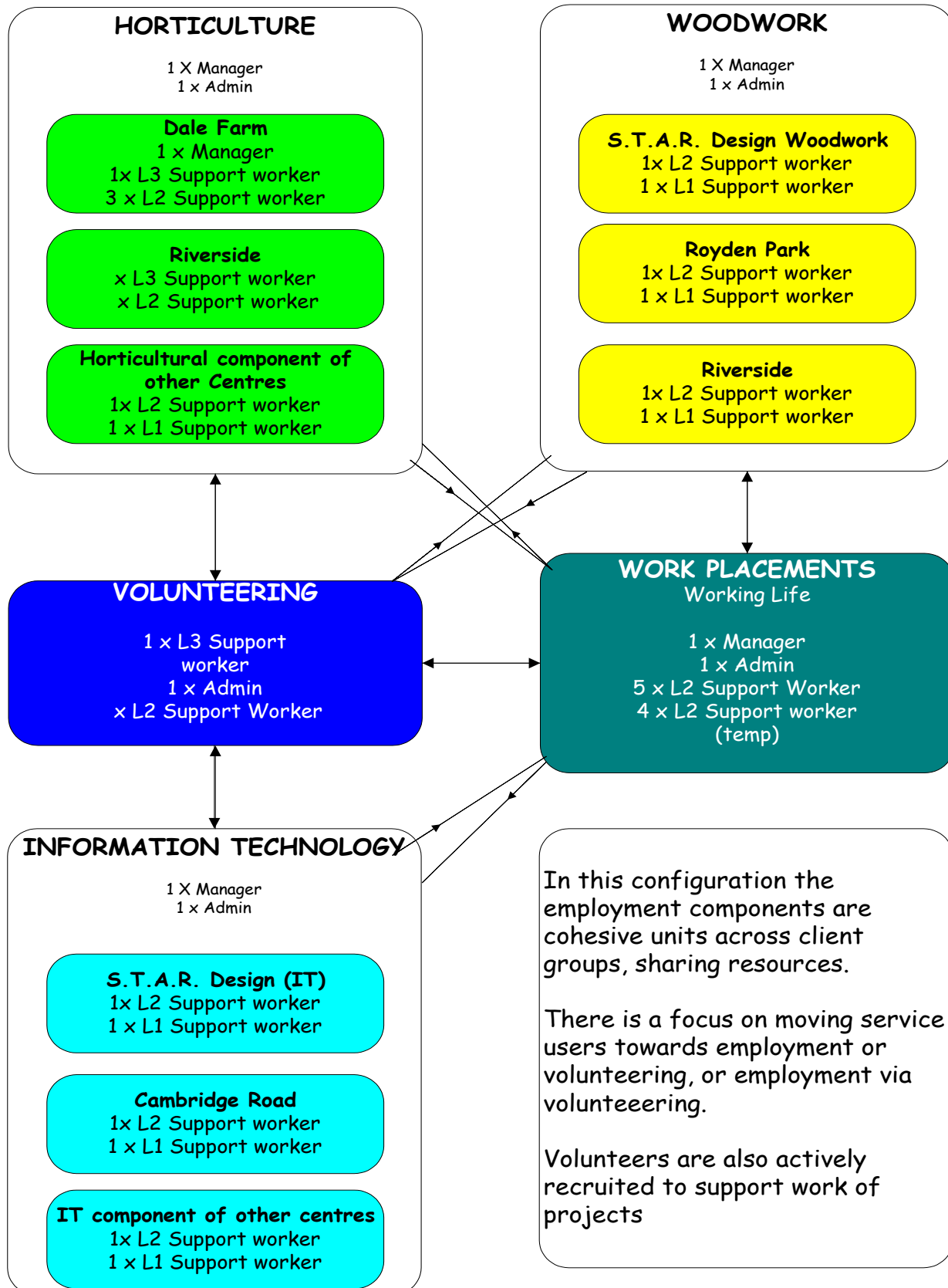


A successful bid has been made to the Neighbourhood Renewal fund for a health action planner and a person specifically to develop person



centred plans for black people with learning disabilities. Both these staff will join the PCP team from Riverside Centre.

**SERVICES CONNECTED WITH SUPPORTED EMPLOYMENT -
PROPOSED RECONFIGURATION**



QUALITY

Providing services for everybody

In 2005 we asked ORC International to find out why black people do not use Learning Disability services in Wirral. ORC talked to black people and has written a report to help us. They said we should:

- Set up a BME steering group to work closely with providers, advocates and carers to change our services.
- Work with Liverpool city council, Cheshire county council and providers to share good practice.
- Talk to black service users and carers more and get them involved in changing things for the better. This could be done though increasing the number of black family carers and service users on the Learning Disability Partnership Board.
- Talk to groups representing black people on ways to improve services. Set up user groups with organisations that represent and work with black people.



We want to set up a Task Group to look at the needs of black people with learning disabilities. The members of the Valuing All Group could start the group. We will need black service users and family carers to make it work properly.



Buying our services in a better way

We are going to check that the Commissioning Strategy works. This is what we planned to do. We will talk to our partners about how we can buy our services in a better way and what things we need to include in it.

More work is need to find out what we are already buying and how much it costs.

Exploring pooled budgets

Discussions with both Primary Care

Health



Social
Services

Trusts are about to start around pooled budgets. These discussions will probably continue until the end of May 2006. It is hoped to report back in June.

Finding out what each service costs



We will have worked out what supported living costs by the end of March 2006. The Supported Living Accreditation process helps this.

We are checking that all our spending is recorded on SWIFT. This will give us unit costs in the future.

Wirral is involved with neighbouring councils in Merseyside looking at best practice. This will ensure that we give value for money.

Further work to develop unit costs for social services delivered services is about to start. This work will take several months and will run into the new financial year.



Making ways into service simple

The various ways into service have now been mapped. We are looking at how we can have one way into service. This is part of the plan to make sure that social workers and nurses assess in the same way. More work is needed on this before we change things.

We have agreed the entitlement to receive a service to make sure it is the same across the Health and Social Services. (See Partnership section). We need to look at all our leaflets to make sure they are accurate and helpful. This has not yet started.

Improving care management

We intend to put all reviews into one single list. Reviewing targets are now set. The Care Management Team is short of social workers, which means we cannot do as many reviews as we intended to.

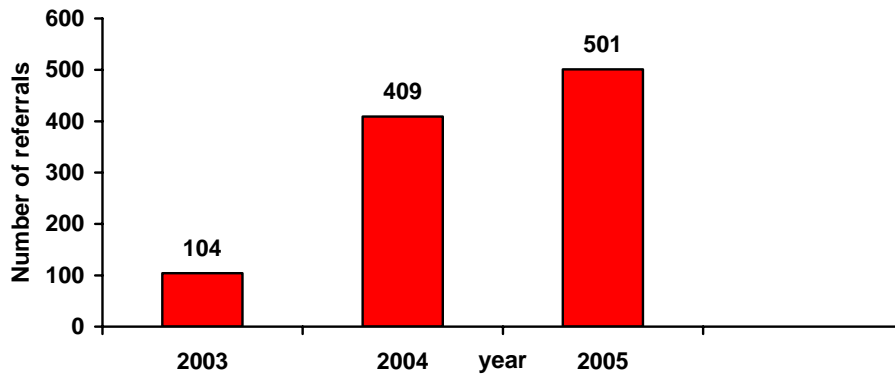


Priorities for reviews are:

- High cost placements
- People living with older carers
- People who have not had a review for a long time

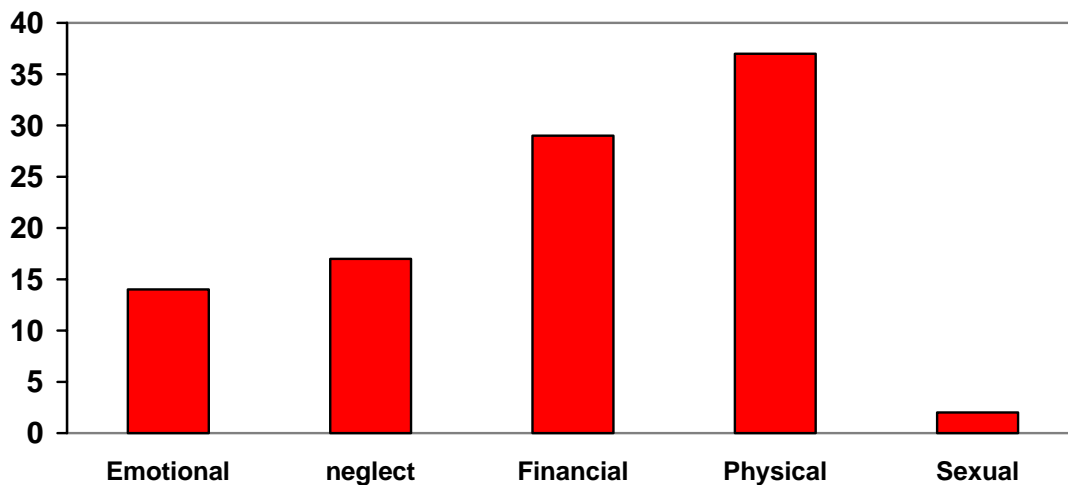
Adult Protection

Adult Protection referrals received by Social Services



The rise in does not reflect more abuse but a greater awareness that people need protecting from abuse. Now anyone wishing to report abuse has a way of doing so. 1 in 3 abuse referrals are for people with a learning disability.

Types of abuse - people with learning disability



Dealing with an allegation of abuse with a person with a learning disability takes more social work time than other service user groups. They need extra help to say what has happened to them. This means that other work (assessments or reviews) is not done.

WORKFORCE PLANNING



The Workforce Development Group is not yet set up. This needs doing as soon as we can.

At 31 December 05 there were 330 Social Services Care Services staff working to provide learning

disabilities services:

- 102 staff were qualified (31%).
- 67 people were in training for their qualification (21%).
- 6 more staff start NVQ training on February 16.
- 4 of the 20 locations met the national NVQ targets (20%).
- 3 locations (15%) being close to meeting the targets.
- 4 locations reported 0% NVQ attainments.

We are talking to Managers to make sure all staff have the right training for their job. Some staff are registered on the new Health and Social Care NVQ which is very different from the standard NVQ.

We are thinking about extra training to help staff do their jobs better. This is called Continuous Professional Development. Managers are being asked to talk to staff about this and tell us if they need the training.

The National Minimum Dataset for Social Care starts on 1 April 2006. From then on all providers will be required to provide information about their workforce. This will make the planning of future service developments more effective. Providers will be asked about their workforce during inspections.

Health staff are being trained in Learning disability awareness. Everybody can have this training. 8 sessions have been planned for the rest of this year.

PARTNERSHIP WORKING

Making sure social workers and nurses assess in the same way

The assessment tool is now being tried out. This will be looked at again in Spring 2006 to make sure it works.

Work needs to be done to ensure assessment and care planning documents can be used on both the social work and the health systems. Technical support managers are very busy so this work has not been done.



Nurses visited Hull to look at how they do things there. The nurses will share what they learned from their visit. All similar authorities to Wirral will be contacted to see how they are doing this. They will all be asked the same questions so that we can compare the answers.

Health and social care service managers have met to look at how to make sure that nurses and social workers can assess in the same way. The important areas are:

Health



Social
Services

- Point of entry
- Work is given out in the same way at the same time.
- Sharing assessments so that people are only asked questions once
- The entitlement to receive a service is the same

A plan to make sure this is done will be made. Managers will talk to social workers and nurses before starting it. People might need extra training to do this. A list of who needs this will be made.

We want to make a list of people and places where social workers and nurses can find extra help for people. Other lists have been made in the past. We need to make sure the list is up to date and share the information. We need to find someone to do the work.

A protocol with mental health services has been agreed. A protocol is an agreement about which is the best service for a particular person. This is when a person could receive a service from either Learning Disability services or mental health services. The Government asked us to do this. If it makes it better for people we will try to do the same for other services.

Cheshire and Wirral Partnership Trust has agreed to Wirral MBC Adult Protection Policy. Nurses now receive Adult Protection training. This is part of the plan to make sure that social workers and nurses do things in the same way. (see also Quality section)

Joint Panels have been set up to make sure that money is spent fairly on people with complex needs. This is also to make sure that people with complex needs get the right services from the right people. The joint commissioner ran briefings for staff so that they knew all about it. As social workers and nurses change the way they work together more training might be needed. We will keep an eye on this to make sure people get the training they need to do their jobs better.

Health



Social
Services

Making the services work together and plan together

Health



Social
Services

We have set up an integration task group to look at making changes faster and together.

The newly agreed same entitlement to receive a service will be tried on all new referrals. This is part of the plan to make sure that social workers and nurses do things in the same way. After we have tried it for a while we will look at it again to make sure it works for people. We will tell the Wirral Health and Social Care Partnership about it.

A Mental Health and Learning Disability Executive has been started with Health. A Mental health and Learning Disability commissioning Group has also been started to look at how we can buy better services

Developing a common data system for caseload management



We are still awaiting approval for permission to access the unique NHS numbers that are given to all people. This is kept very confidential.

Before the NHS allow Social Services to obtain the numbers they want to know exactly how Social Services keep their records and how they keep the information confidential. This is a problem most Local Authorities are having. Others tell us this might take 18-months to happen. Once this happens we will be able to link social care records with health records.

The other side of this is we need to check that Care Notes meet the specific recording and reporting requirements of the new Adult Social Care Department. Staff will be involved in this process.